



SPA9 Polyclonal Antibody

Catalog No	BYab-06157
Isotype	IgG
Reactivity	Human;Mouse
Applications	WB;ELISA
Gene Name	SERPINA9 GCET1 SERPINA11 UNQ692/PRO1337
Protein Name	Serpin A9 (Centerin) (Germinal center B-cell-expressed transcript 1 protein)
Immunogen	Synthesized peptide derived from part region of human protein
Specificity	SPA9 Polyclonal Antibody detects endogenous levels of protein.
Formulation	Liquid in PBS containing 50% glycerol, and 0.02% sodium azide.
Source	Polyclonal, Rabbit,IgG
Purification	The antibody was affinity-purified from rabbit antiserum by affinity-chromatography using epitope-specific immunogen.
Dilution	WB 1:500-2000 ELISA 1:5000-20000
Concentration	1 mg/ml
Purity	≥90%
Storage Stability	-20°C/1 year
Synonyms	
Observed Band	45kD
Cell Pathway	[Isoform 1]: Secreted.; [Isoform 2]: Cytoplasm .; [Isoform 3]: Cytoplasm .; [Isoform 4]: Cytoplasm .; [Isoform 5]: Cytoplasm .; [Isoform 6]: Cytoplasm .; [Isoform 7]: Membrane ; Single-pass type II membrane protein .
Tissue Specificity	Highly expressed in normal germinal center (GC) B-cells and GC B-cell-derived malignancies.
Function	similarity:Belongs to the serpin family.,tissue specificity:Highly expressed in normal germinal center (GC) B-cells and GC B-cell-derived malignancies.,
Background	similarity:Belongs to the serpin family.,tissue specificity:Highly expressed in normal germinal center (GC) B-cells and GC B-cell-derived malignancies.,
matters needing attention	Avoid repeated freezing and thawing!

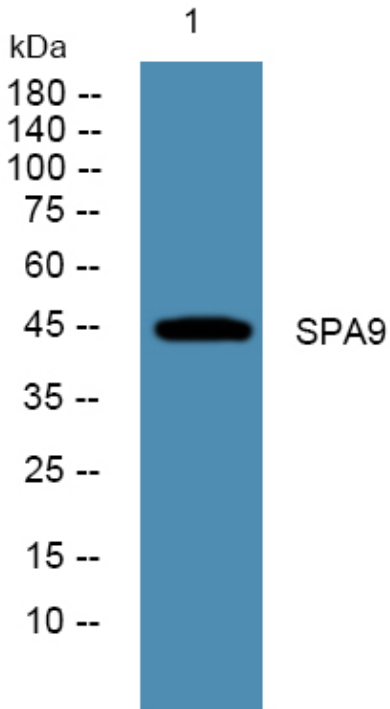
Nanjing BYabscience technology Co.,Ltd



Usage suggestions

This product can be used in immunological reaction related experiments. For more information, please consult technical personnel.

Products Images



Western blot analysis of lysates from K562 cells, primary antibody was diluted at 1:1000, 4° over night