



# CNEP1 Polyclonal Antibody

<b>Catalog No</b>	BYab-06154
<b>Isotype</b>	IgG
<b>Reactivity</b>	Human;Rat;Mouse
<b>Applications</b>	WB;ELISA
<b>Gene Name</b>	CTDNEP1 DULLARD
<b>Protein Name</b>	CTD nuclear envelope phosphatase 1 (EC 3.1.3.16) (Serine/threonine-protein phosphatase dullard)
<b>Immunogen</b>	Synthesized peptide derived from human protein . at AA range: 100-180
<b>Specificity</b>	CNEP1 Polyclonal Antibody detects endogenous levels of protein.
<b>Formulation</b>	Liquid in PBS containing 50% glycerol, and 0.02% sodium azide.
<b>Source</b>	Polyclonal, Rabbit,IgG
<b>Purification</b>	The antibody was affinity-purified from rabbit antiserum by affinity-chromatography using epitope-specific immunogen.
<b>Dilution</b>	WB 1:500-2000 ELISA 1:5000-20000
<b>Concentration</b>	1 mg/ml
<b>Purity</b>	≥90%
<b>Storage Stability</b>	-20°C/1 year
<b>Synonyms</b>	
<b>Observed Band</b>	26kD
<b>Cell Pathway</b>	Endoplasmic reticulum membrane; Single-pass membrane protein. Nucleus membrane; Single-pass membrane protein.
<b>Tissue Specificity</b>	Muscle specific with lower expression in other metabolic tissues.
<b>Function</b>	catalytic activity:A phosphoprotein + H(2)O = a protein + phosphate.,function:Serine/threonine phosphatase which may be required for proper nuclear membrane morphology. Involved in LPIN1 dephosphorylation. May antagonize BMP signaling.,similarity:Belongs to the dullard family.,similarity:Contains 1 FCP1 homology domain.,
<b>Background</b>	catalytic activity:A phosphoprotein + H(2)O = a protein + phosphate.,function:Serine/threonine phosphatase which may be required for proper nuclear membrane morphology. Involved in LPIN1 dephosphorylation. May antagonize BMP signaling.,similarity:Belongs to the dullard family.,similarity:Contains 1 FCP1 homology domain.,

Nanjing BYabscience technology Co.,Ltd



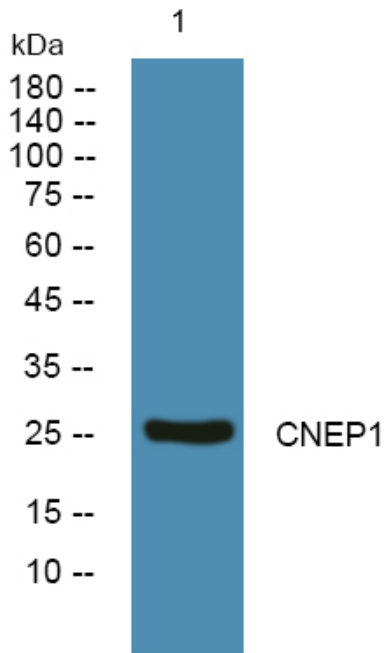
**matters needing attention**

Avoid repeated freezing and thawing!

**Usage suggestions**

This product can be used in immunological reaction related experiments. For more information, please consult technical personnel.

**Products Images**



Western blot analysis of lysates from KB cells, primary antibody was diluted at 1:1000, 4° over night