



SGK2 Polyclonal Antibody

Catalog No	BYab-06139
Isotype	IgG
Reactivity	Human;Rat;Mouse
Applications	WB;ELISA
Gene Name	SGK2
Protein Name	Serine/threonine-protein kinase Sgk2 (EC 2.7.11.1) (Serum/glucocorticoid-regulated kinase 2)
Immunogen	Synthesized peptide derived from part region of human protein
Specificity	SGK2 Polyclonal Antibody detects endogenous levels of protein.
Formulation	Liquid in PBS containing 50% glycerol, and 0.02% sodium azide.
Source	Polyclonal, Rabbit,IgG
Purification	The antibody was affinity-purified from rabbit antiserum by affinity-chromatography using epitope-specific immunogen.
Dilution	WB 1:500-2000 ELISA 1:5000-20000
Concentration	1 mg/ml
Purity	≥90%
Storage Stability	-20°C/1 year
Synonyms	
Observed Band	46kD
Cell Pathway	Cytoplasm . Nucleus .
Tissue Specificity	Highly expressed in liver, kidney and pancreas, and at lower levels in brain.
Function	catalytic activity:ATP + a protein = ADP + a phosphoprotein.,caution:Not regulated by serum or glucocorticoids.,enzyme regulation:Two specific sites, one in the kinase domain (Thr-253) and the other in the C-terminal regulatory region (Ser-416), need to be phosphorylated for its full activation.,function:Involved in the activation of potassium channels.,similarity:Belongs to the protein kinase superfamily.,similarity:Belongs to the protein kinase superfamily. AGC Ser/Thr protein kinase family.,similarity:Contains 1 AGC-kinase C-terminal domain.,similarity:Contains 1 protein kinase domain.,tissue specificity:Highly expressed in liver, kidney and pancreas, and at lower levels in brain.,
Background	This gene encodes a serine/threonine protein kinase. Although this gene product is similar to serum- and glucocorticoid-induced protein kinase (SGK), this gene is

Nanjing BYabscience technology Co.,Ltd



not induced by serum or glucocorticoids. This gene is induced in response to signals that activate phosphatidylinositol 3-kinase, which is also true for SGK. Alternative splicing results in multiple transcript variants. [provided by RefSeq, Nov 2010],

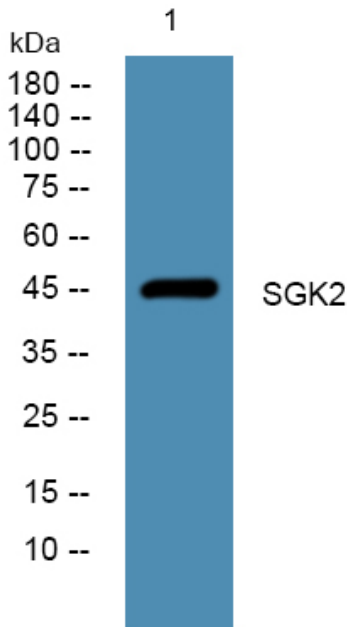
matters needing attention

Avoid repeated freezing and thawing!

Usage suggestions

This product can be used in immunological reaction related experiments. For more information, please consult technical personnel.

Products Images



Western blot analysis of lysates from SH-SY5Y cells, primary antibody was diluted at 1:1000, 4° over night