



STK40 Polyclonal Antibody

Catalog No	BYab-06129
Isotype	IgG
Reactivity	Human;Rat;Mouse
Applications	WB;ELISA
Gene Name	STK40 SGK495 SHIK
Protein Name	Serine/threonine-protein kinase 40 (EC 2.7.11.1) (SINK-homologous serine/threonine-protein kinase) (Sugen kinase 495) (SgK495)
Immunogen	Synthesized peptide derived from human protein . at AA range: 30-110
Specificity	STK40 Polyclonal Antibody detects endogenous levels of protein.
Formulation	Liquid in PBS containing 50% glycerol, and 0.02% sodium azide.
Source	Polyclonal, Rabbit,IgG
Purification	The antibody was affinity-purified from rabbit antiserum by affinity-chromatography using epitope-specific immunogen.
Dilution	WB 1:500-2000 ELISA 1:5000-20000
Concentration	1 mg/ml
Purity	≥90%
Storage Stability	-20°C/1 year
Synonyms	
Observed Band	47kD
Cell Pathway	Nucleus . Cytoplasm .
Tissue Specificity	Strongly expressed in heart, brain, placenta, lung, skeletal muscle, kidney, spleen, thymus, prostate, liver, pancreas, testis, ovary, small intestine, colon and peripheral blood leukocytes.
Function	catalytic activity:ATP + a protein = ADP + a phosphoprotein.,function:May be a negative regulator of NF-kappa-B and p53-mediated gene transcription.,similarity:Belongs to the protein kinase superfamily. CAMK Ser/Thr protein kinase family.,similarity:Contains 1 protein kinase domain.,tissue specificity:Strongly expressed in heart, brain, placenta, lung, skeletal muscle, kidney, spleen, thymus, prostate, liver, pancreas, testis, ovary, small intestine, colon and peripheral blood leukocytes.,
Background	catalytic activity:ATP + a protein = ADP + a phosphoprotein.,function:May be a negative regulator of NF-kappa-B and p53-mediated gene transcription.,similarity:Belongs to the protein kinase superfamily. CAMK Ser/Thr

Nanjing BYabscience technology Co.,Ltd



protein kinase family.,similarity:Contains 1 protein kinase domain.,tissue specificity:Strongly expressed in heart, brain, placenta, lung, skeletal muscle, kidney, spleen, thymus, prostate, liver, pancreas, testis, ovary, small intestine, colon and peripheral blood leukocytes.,

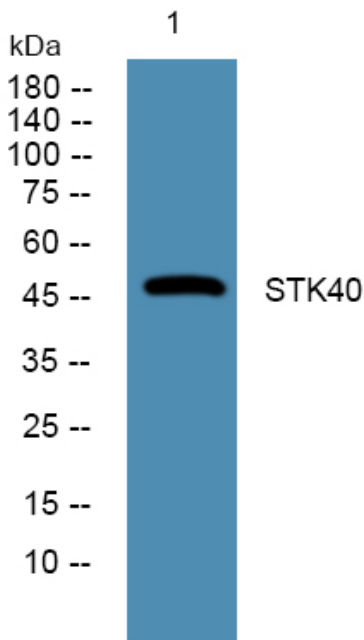
matters needing attention

Avoid repeated freezing and thawing!

Usage suggestions

This product can be used in immunological reaction related experiments. For more information, please consult technical personnel.

Products Images



Western blot analysis of lysates from A431 cells, primary antibody was diluted at 1:1000, 4° over night