



# STK25 Polyclonal Antibody

<b>Catalog No</b>	BYab-06125
<b>Isotype</b>	IgG
<b>Reactivity</b>	Human;Mouse
<b>Applications</b>	WB;ELISA
<b>Gene Name</b>	STK25 SOK1 YSK1
<b>Protein Name</b>	Serine/threonine-protein kinase 25 (EC 2.7.11.1) (Ste20-like kinase) (Sterile 20/oxidant stress-response kinase 1) (SOK-1) (Ste20/oxidant stress response kinase 1)
<b>Immunogen</b>	Synthesized peptide derived from human protein . at AA range: 170-250
<b>Specificity</b>	STK25 Polyclonal Antibody detects endogenous levels of protein.
<b>Formulation</b>	Liquid in PBS containing 50% glycerol, and 0.02% sodium azide.
<b>Source</b>	Polyclonal, Rabbit,IgG
<b>Purification</b>	The antibody was affinity-purified from rabbit antiserum by affinity-chromatography using epitope-specific immunogen.
<b>Dilution</b>	WB 1:500-2000 ELISA 1:5000-20000
<b>Concentration</b>	1 mg/ml
<b>Purity</b>	≥90%
<b>Storage Stability</b>	-20°C/1 year
<b>Synonyms</b>	
<b>Observed Band</b>	46kD
<b>Cell Pathway</b>	Cytoplasm . Golgi apparatus . Localizes to the Golgi apparatus.
<b>Tissue Specificity</b>	Ubiquitously expressed. Highest levels are found in testis, large intestine, brain and stomach followed by heart and lung.
<b>Function</b>	catalytic activity:ATP + a protein = ADP + a phosphoprotein.,cofactor:Magnesium.,enzyme regulation:Interaction with Golgi matrix protein GOLGA2 leads to autophosphorylation on Thr-174, possibly as a consequence of stabilization of dimer formation. The C-terminal non-catalytic region inhibits the kinase activity.,function:Oxidant stress-activated serine/threonine kinase that may play a role in the response to environmental stress. Targets to the Golgi apparatus where it appears to regulate protein transport events, cell adhesion, and polarity complexes important for cell migration.,PTM:Phosphorylated upon DNA damage, probably by ATM or ATR.,similarity:Belongs to the protein kinase superfamily. STE Ser/Thr protein

Nanjing BYabscience technology Co.,Ltd



kinase family. STE20 subfamily.,similarity:Contains 1 protein kinase domain.,subcellular location:Localizes to the Golgi apparatus.,subunit:Homodimer.,tissue specificity:Ubiquito

### Background

This gene encodes a member of the germinal centre kinase III (GCK III) subfamily of the sterile 20 superfamily of kinases. The encoded enzyme plays a role in serine-threonine liver kinase B1 (LKB1) signaling pathway to regulate neuronal polarization and morphology of the Golgi apparatus. The protein is translocated from the Golgi apparatus to the nucleus in response to chemical anoxia and plays a role in regulation of cell death. A pseudogene associated with this gene is located on chromosome 18. Multiple alternatively spliced transcript variants have been observed for this gene. [provided by RefSeq, Dec 2012],

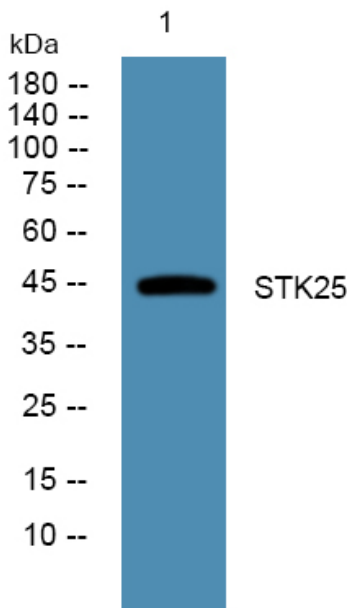
### matters needing attention

Avoid repeated freezing and thawing!

### Usage suggestions

This product can be used in immunological reaction related experiments. For more information, please consult technical personnel.

## Products Images



Western blot analysis of lysates from DU145 cells, primary antibody was diluted at 1:1000, 4° over night