



SEP11 Polyclonal Antibody

Catalog No	BYab-06122
Isotype	IgG
Reactivity	Human;Mouse;Rat
Applications	WB;ELISA
Gene Name	42989
Protein Name	Septin-11
Immunogen	Synthesized peptide derived from human protein . at AA range: 200-280
Specificity	SEP11 Polyclonal Antibody detects endogenous levels of protein.
Formulation	Liquid in PBS containing 50% glycerol, and 0.02% sodium azide.
Source	Polyclonal, Rabbit,IgG
Purification	The antibody was affinity-purified from rabbit antiserum by affinity-chromatography using epitope-specific immunogen.
Dilution	WB 1:500-2000 ELISA 1:5000-20000
Concentration	1 mg/ml
Purity	≥90%
Storage Stability	-20°C/1 year
Synonyms	
Observed Band	47kD
Cell Pathway	Cytoplasm, cytoskeleton. Cell junction, synapse. Cell projection, dendritic spine. Cell projection, axon . Partly colocalizes with stress fibers and microtubules. During bacterial infection, displays a collar shape structure next to actin at the pole of invading bacteria.
Tissue Specificity	Widely expressed, except in leukocytes.
Function	disease:A chromosomal aberration involving SEPT11 may be a cause of chronic neutrophilic leukemia. Translocation t(4;11)(q21;q23) with MLL/HRX.,function:Involved in cytokinesis .,similarity:Belongs to the septin family.,subunit:May assemble into a multicomponent structure. Interacts with SEPT12.,
Background	SEPT11 belongs to the conserved septin family of filament-forming cytoskeletal GTPases that are involved in a variety of cellular functions including cytokinesis and vesicle trafficking (Hanai et al., 2004 [PubMed 15196925]; Nagata et al., 2004 [PubMed 15485874]).[supplied by OMIM, Jul 2009],

Nanjing BYabscience technology Co.,Ltd



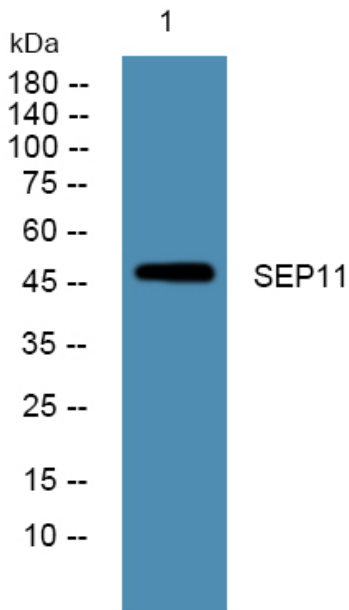
matters needing attention

Avoid repeated freezing and thawing!

Usage suggestions

This product can be used in immunological reaction related experiments. For more information, please consult technical personnel.

Products Images



Western blot analysis of lysates from K562 cells, primary antibody was diluted at 1:1000, 4° over night