



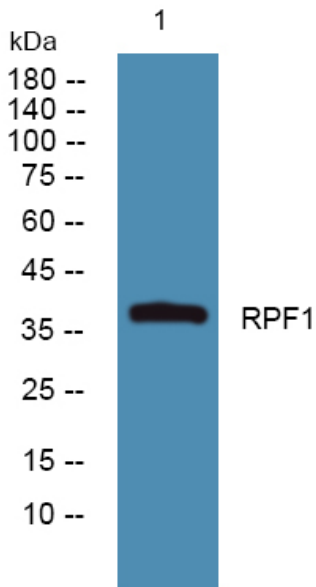
# RPF1 Polyclonal Antibody

<b>Catalog No</b>	BYab-06109
<b>Isotype</b>	IgG
<b>Reactivity</b>	Human;Rat;Mouse
<b>Applications</b>	WB;ELISA
<b>Gene Name</b>	RPF1 BXDC5
<b>Protein Name</b>	Ribosome production factor 1 (Brix domain-containing protein 5) (Ribosome biogenesis protein RPF1)
<b>Immunogen</b>	Synthesized peptide derived from human protein . at AA range: 180-260
<b>Specificity</b>	RPF1 Polyclonal Antibody detects endogenous levels of protein.
<b>Formulation</b>	Liquid in PBS containing 50% glycerol, and 0.02% sodium azide.
<b>Source</b>	Polyclonal, Rabbit,IgG
<b>Purification</b>	The antibody was affinity-purified from rabbit antiserum by affinity-chromatography using epitope-specific immunogen.
<b>Dilution</b>	WB 1:500-2000 ELISA 1:5000-20000
<b>Concentration</b>	1 mg/ml
<b>Purity</b>	≥90%
<b>Storage Stability</b>	-20°C/1 year
<b>Synonyms</b>	
<b>Observed Band</b>	38kD
<b>Cell Pathway</b>	Nucleus, nucleolus .
<b>Tissue Specificity</b>	Amygdala,B-cell,Teratocarcinoma,
<b>Function</b>	function:May be required for ribosome biogenesis.,similarity:Contains 1 Brix domain.,
<b>Background</b>	function:May be required for ribosome biogenesis.,similarity:Contains 1 Brix domain.,
<b>matters needing attention</b>	Avoid repeated freezing and thawing!
<b>Usage suggestions</b>	This product can be used in immunological reaction related experiments. For more information, please consult technical personnel.

**Nanjing BYabscience technology Co.,Ltd**



## Products Images



Western blot analysis of lysates from DU145 cells, primary antibody was diluted at 1:1000, 4° over night