



# RHXF1 Polyclonal Antibody

<b>Catalog No</b>	BYab-06103
<b>Isotype</b>	IgG
<b>Reactivity</b>	Human;Rat;Mouse;
<b>Applications</b>	WB;ELISA
<b>Gene Name</b>	RHOXF1 OTEX PEPP1
<b>Protein Name</b>	Rhox homeobox family member 1 (Ovary-, testis- and epididymis-expressed gene protein) (Paired-like homeobox protein PEPP-1)
<b>Immunogen</b>	Synthesized peptide derived from human protein . at AA range: 110-190
<b>Specificity</b>	RHXF1 Polyclonal Antibody detects endogenous levels of protein.
<b>Formulation</b>	Liquid in PBS containing 50% glycerol, and 0.02% sodium azide.
<b>Source</b>	Polyclonal, Rabbit,IgG
<b>Purification</b>	The antibody was affinity-purified from rabbit antiserum by affinity-chromatography using epitope-specific immunogen.
<b>Dilution</b>	WB 1:500-2000 ELISA 1:5000-20000
<b>Concentration</b>	1 mg/ml
<b>Purity</b>	≥90%
<b>Storage Stability</b>	-20°C/1 year
<b>Synonyms</b>	
<b>Observed Band</b>	20kD
<b>Cell Pathway</b>	Nucleus .
<b>Tissue Specificity</b>	Ovary, testis and epididymis. Also detected in the prostate and the mammary gland. Expressed in many tumor cell lines derived from acute lymphocytic leukemia, prostate, endometrial adenocarcinoma, melanoma, bladder carcinoma, colon carcinoma, erythroleukemia and breast carcinoma. Not expressed in placenta. In testis, mainly expressed in germ cells, but also detected in somatic cells such as Sertoli cells, Leydig cells and peritubular cells (PubMed:28171660).
<b>Function</b>	domain:Mutagenesis of amino acids 147 to 164 and 155 to 164 lead to a major cytoplasmic localization, with only minor localization in the nucleus.,function:May be a transcription factor involved in reproductive processes.,induction:By androgen.,similarity:Belongs to the paired-like homeobox family. PEPP subfamily.,similarity:Contains 1 homeobox DNA-binding domain.,subunit:Does not interact with itself.,tissue specificity:Ovary, testis and epididymis. Also detected in the prostate and the mammary gland. Expressed in many tumor cell

Nanjing BYabscience technology Co.,Ltd



lines derived from acute lymphocytic leukemia, prostate, endometrial adenocarcinoma, melanoma, bladder carcinoma, colon carcinoma, erythroleukemia and breast carcinoma. Not expressed in placenta.,

**Background**

This gene is a member of the PEPP subfamily of paired-like homoeobox genes. The gene may be regulated by androgens and epigenetic mechanisms. The encoded nuclear protein is likely a transcription factor that may play a role in human reproduction. [provided by RefSeq, Dec 2012],

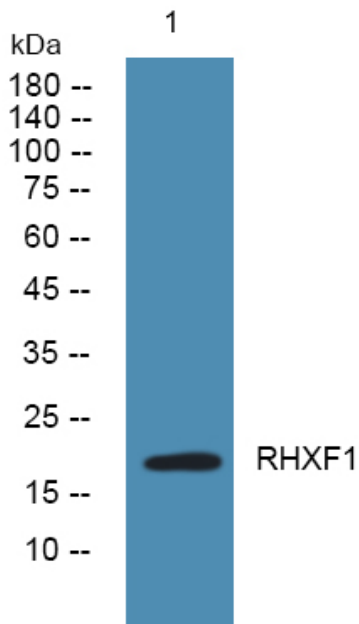
**matters needing attention**

Avoid repeated freezing and thawing!

**Usage suggestions**

This product can be used in immunological reaction related experiments. For more information, please consult technical personnel.

**Products Images**



Western blot analysis of lysates from Jarkat cells, primary antibody was diluted at 1:1000, 4° over night