



RND2 Polyclonal Antibody

Catalog No	BYab-06101
Isotype	IgG
Reactivity	Human;Mouse
Applications	WB;ELISA
Gene Name	RND2 ARHN RHO7
Protein Name	Rho-related GTP-binding protein RhoN (Rho family GTPase 2) (Rho-related GTP-binding protein Rho7) (Rnd2)
Immunogen	Synthesized peptide derived from human protein . at AA range: 140-220
Specificity	RND2 Polyclonal Antibody detects endogenous levels of protein.
Formulation	Liquid in PBS containing 50% glycerol, and 0.02% sodium azide.
Source	Polyclonal, Rabbit,IgG
Purification	The antibody was affinity-purified from rabbit antiserum by affinity-chromatography using epitope-specific immunogen.
Dilution	WB 1:500-2000 ELISA 1:5000-20000
Concentration	1 mg/ml
Purity	≥90%
Storage Stability	-20°C/1 year
Synonyms	
Observed Band	24kD
Cell Pathway	Cytoplasmic vesicle, secretory vesicle, acrosome membrane ; Lipid-anchor ; Cytoplasmic side . Colocalizes with RACGAP1 in Golgi-derived proacrosomal vesicles and the acrosome. .
Tissue Specificity	Highly expressed in testis.
Function	function:May be specifically involved in neuronal and hepatic functions. Is a C3 toxin-insensitive member of the Rho subfamily.,similarity:Belongs to the small GTPase superfamily. Rho family.,subcellular location:Colocalizes with RACGAP1 in Golgi-derived proacrosomal vesicles and the acrosome.,subunit:Interacts with the Rho-GAP domain of RACGAP1. Interacts with UBXD5.,tissue specificity:Highly expressed in testis.,
Background	This gene encodes a member of the Rho GTPase family, whose members play a key role in the regulation of actin cytoskeleton organization in response to extracellular growth factors. This particular family member has been implicated in the regulation of neuronal morphology and endosomal trafficking. The gene

Nanjing BYabscience technology Co.,Ltd



localizes to chromosome 17 and is the centromeric neighbor of the breast-ovarian cancer susceptibility gene BRCA1. [provided by RefSeq, Jul 2008],

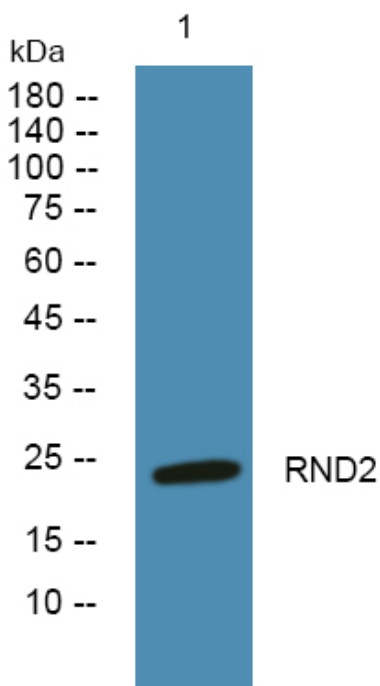
matters needing attention

Avoid repeated freezing and thawing!

Usage suggestions

This product can be used in immunological reaction related experiments. For more information, please consult technical personnel.

Products Images



Western blot analysis of lysates from Jarkat cells, primary antibody was diluted at 1:1000, 4° over night