



# RHOJ Polyclonal Antibody

<b>Catalog No</b>	BYab-06100
<b>Isotype</b>	IgG
<b>Reactivity</b>	Human;Mouse
<b>Applications</b>	WB;ELISA
<b>Gene Name</b>	RHOJ ARHJ RASL7B RHOI TCL
<b>Protein Name</b>	Rho-related GTP-binding protein RhoJ (Ras-like protein family member 7B) (Tc10-like GTP-binding protein)
<b>Immunogen</b>	Synthesized peptide derived from human protein . at AA range: 30-110
<b>Specificity</b>	RHOJ Polyclonal Antibody detects endogenous levels of protein.
<b>Formulation</b>	Liquid in PBS containing 50% glycerol, and 0.02% sodium azide.
<b>Source</b>	Polyclonal, Rabbit,IgG
<b>Purification</b>	The antibody was affinity-purified from rabbit antiserum by affinity-chromatography using epitope-specific immunogen.
<b>Dilution</b>	WB 1:500-2000 ELISA 1:5000-20000
<b>Concentration</b>	1 mg/ml
<b>Purity</b>	≥90%
<b>Storage Stability</b>	-20°C/1 year
<b>Synonyms</b>	
<b>Observed Band</b>	23kD
<b>Cell Pathway</b>	Cell membrane ; Lipid-anchor ; Cytoplasmic side . Localization to the plasma membrane is regulated by GLUL. .
<b>Tissue Specificity</b>	Specifically expressed in endothelial cells in different tissues, such as brain, heart, lung and liver.
<b>Function</b>	function:GTP-binding protein with GTPase activity. Elicits the formation of F-actin-rich structures in fibroblasts and is involved in the regulation of cell morphology.,similarity:Belongs to the small GTPase superfamily. Rho family.,subunit:Interacts with the CRIB domains of proteins such as Pak1 and Was/Wasp.,
<b>Background</b>	This gene encodes one of the many small GTP-binding proteins in the Rho family shown to be associated with focal adhesions in endothelial cells (PMID: 21148427, 22103495). The encoded protein is activated by vascular endothelial growth factor and may regulate angiogenesis. [provided by RefSeq, Dec 2011],

Nanjing BYabscience technology Co.,Ltd



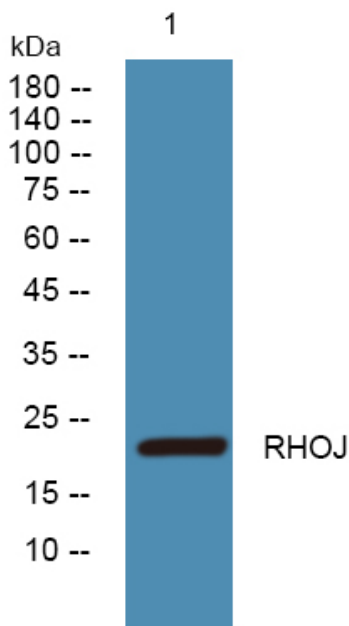
**matters needing attention**

Avoid repeated freezing and thawing!

**Usage suggestions**

This product can be used in immunological reaction related experiments. For more information, please consult technical personnel.

## Products Images



Western blot analysis of lysates from K562 cells, primary antibody was diluted at 1:1000, 4° over night