



RND3 Polyclonal Antibody

Catalog No	BYab-06098
Isotype	IgG
Reactivity	Human;Rat;Mouse
Applications	WB;ELISA
Gene Name	RND3 ARHE RHO8 RHOE
Protein Name	Rho-related GTP-binding protein RhoE (Protein MemB) (Rho family GTPase 3) (Rho-related GTP-binding protein Rho8) (Rnd3)
Immunogen	Synthesized peptide derived from human protein . at AA range: 150-230
Specificity	RND3 Polyclonal Antibody detects endogenous levels of protein.
Formulation	Liquid in PBS containing 50% glycerol, and 0.02% sodium azide.
Source	Polyclonal, Rabbit,IgG
Purification	The antibody was affinity-purified from rabbit antiserum by affinity-chromatography using epitope-specific immunogen.
Dilution	WB 1:500-2000 ELISA 1:5000-20000
Concentration	1 mg/ml
Purity	≥90%
Storage Stability	-20°C/1 year
Synonyms	
Observed Band	26kD
Cell Pathway	Golgi apparatus membrane; Peripheral membrane protein.
Tissue Specificity	Ubiquitous.
Function	function: Binds GTP but lacks intrinsic GTPase activity and is resistant to Rho-specific GTPase-activating proteins. ,similarity: Belongs to the small GTPase superfamily. Rho family. ,subunit: Binds ROCK1 (By similarity). Interacts with UBXD5. ,tissue specificity: Ubiquitous. ,
Background	This gene encodes a protein which is a member of the small GTPase protein superfamily. The encoded protein binds only GTP but has no GTPase activity, and appears to act as a negative regulator of cytoskeletal organization leading to loss of adhesion. Multiple alternatively spliced variants, encoding the same protein, have been identified. [provided by RefSeq, Dec 2011],

Nanjing BYabscience technology Co.,Ltd



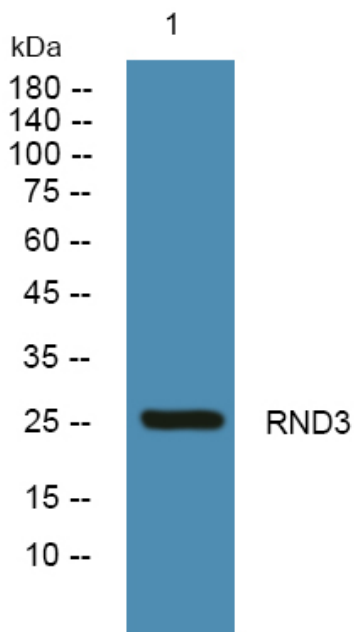
matters needing attention

Avoid repeated freezing and thawing!

Usage suggestions

This product can be used in immunological reaction related experiments. For more information, please consult technical personnel.

Products Images



Western blot analysis of lysates from K562 cells, primary antibody was diluted at 1:1000, 4° over night