



RND1 Polyclonal Antibody

Catalog No	BYab-06097
Isotype	IgG
Reactivity	Human;Mouse
Applications	WB;ELISA
Gene Name	RND1 RHO6
Protein Name	Rho-related GTP-binding protein Rho6 (Rho family GTPase 1) (Rnd1)
Immunogen	Synthesized peptide derived from human protein . at AA range: 140-220
Specificity	RND1 Polyclonal Antibody detects endogenous levels of protein.
Formulation	Liquid in PBS containing 50% glycerol, and 0.02% sodium azide.
Source	Polyclonal, Rabbit,IgG
Purification	The antibody was affinity-purified from rabbit antiserum by affinity-chromatography using epitope-specific immunogen.
Dilution	WB 1:500-2000 ELISA 1:5000-20000
Concentration	1 mg/ml
Purity	≥90%
Storage Stability	-20°C/1 year
Synonyms	
Observed Band	25kD
Cell Pathway	Cell membrane ; Lipid-anchor ; Cytoplasmic side . Cytoplasm, cytoskeleton .
Tissue Specificity	Mostly expressed in brain and liver.
Function	function:Lacks intrinsic GTPase activity. Has a low affinity for GDP, and constitutively binds GTP. Controls rearrangements of the actin cytoskeleton. Induces the Rac-dependent neuritic process formation in part by disruption of the cortical actin filaments. Causes the formation of many neuritic processes from the cell body with disruption of the cortical actin filaments.,similarity:Belongs to the small GTPase superfamily. Rho family.,subunit:Binds GRB7 and PLXNB1. Interacts with UBXD5.,tissue specificity:Mostly expressed in brain and liver.,
Background	This gene encodes a protein that belongs to the Rho GTPase family. Members of this family regulate the organization of the actin cytoskeleton in response to extracellular growth factors. A similar protein in rat interacts with a microtubule regulator to control axon extension. [provided by RefSeq, Apr 2014],

Nanjing BYabscience technology Co.,Ltd



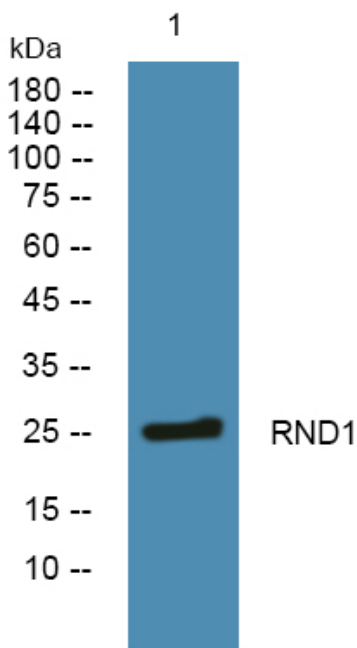
matters needing attention

Avoid repeated freezing and thawing!

Usage suggestions

This product can be used in immunological reaction related experiments. For more information, please consult technical personnel.

Products Images



Western blot analysis of lysates from SH-SY5Y cells, primary antibody was diluted at 1:1000, 4° over night