



TIG3 Polyclonal Antibody

Catalog No	BYab-06082
Isotype	IgG
Reactivity	Human;Rat;Mouse;
Applications	WB;ELISA
Gene Name	RARRES3 RIG1 TIG3
Protein Name	Retinoic acid receptor responder protein 3 (EC 3.1.1.-) (RAR-responsive protein TIG3) (Retinoid-inducible gene 1 protein) (Tazarotene-induced gene 3 protein)
Immunogen	Synthesized peptide derived from human protein . at AA range: 80-160
Specificity	TIG3 Polyclonal Antibody detects endogenous levels of protein.
Formulation	Liquid in PBS containing 50% glycerol, and 0.02% sodium azide.
Source	Polyclonal, Rabbit,IgG
Purification	The antibody was affinity-purified from rabbit antiserum by affinity-chromatography using epitope-specific immunogen.
Dilution	WB 1:500-2000 ELISA 1:5000-20000
Concentration	1 mg/ml
Purity	≥90%
Storage Stability	-20°C/1 year
Synonyms	
Observed Band	18kD
Cell Pathway	Membrane ; Single-pass membrane protein .
Tissue Specificity	Widely expressed.
Function	function:May be a growth regulator that mediates some of the growth suppressive effects of retinoids.,induction:By tazarotene.,similarity:Belongs to the H-rev107 family.,tissue specificity:Expressed in many tissues. Not expressed in heart, brain, and testis.,
Background	Retinoids exert biologic effects such as potent growth inhibitory and cell differentiation activities and are used in the treatment of hyperproliferative dermatological diseases. These effects are mediated by specific nuclear receptor proteins that are members of the steroid and thyroid hormone receptor superfamily of transcriptional regulators. RARRES1, RARRES2, and RARRES3 are genes whose expression is upregulated by the synthetic retinoid tazarotene. RARRES3 is thought act as a tumor suppressor or growth regulator. [provided by

Nanjing BYabscience technology Co.,Ltd



RefSeq, Jul 2008],

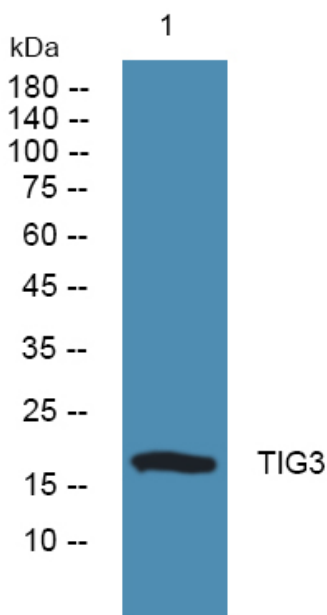
matters needing attention

Avoid repeated freezing and thawing!

Usage suggestions

This product can be used in immunological reaction related experiments. For more information, please consult technical personnel.

Products Images



Western blot analysis of lysates from K562 cells, primary antibody was diluted at 1:1000, 4° over night