



RFPL2 Polyclonal Antibody

Catalog No	BYab-06079
Isotype	IgG
Reactivity	Human;Rat;Mouse;
Applications	WB;ELISA
Gene Name	RFPL2 RNF79
Protein Name	Ret finger protein-like 2 (RING finger protein 79)
Immunogen	Synthesized peptide derived from human protein . at AA range: 100-180
Specificity	RFPL2 Polyclonal Antibody detects endogenous levels of protein.
Formulation	Liquid in PBS containing 50% glycerol, and 0.02% sodium azide.
Source	Polyclonal, Rabbit,IgG
Purification	The antibody was affinity-purified from rabbit antiserum by affinity-chromatography using epitope-specific immunogen.
Dilution	WB 1:500-2000 ELISA 1:5000-20000
Concentration	1 mg/ml
Purity	≥90%
Storage Stability	-20°C/1 year
Synonyms	
Observed Band	41kD
Cell Pathway	
Tissue Specificity	Seems to be expressed in prostate and less abundantly in adult brain, fetal liver, and fetal kidney.
Function	similarity:Contains 1 B30.2/SPRY domain.,similarity:Contains 1 RING-type zinc finger.,tissue specificity:Seems to be expressed in prostate and less abundantly in adult brain, fetal liver, and fetal kidney.,
Background	similarity:Contains 1 B30.2/SPRY domain.,similarity:Contains 1 RING-type zinc finger.,tissue specificity:Seems to be expressed in prostate and less abundantly in adult brain, fetal liver, and fetal kidney.,
matters needing attention	Avoid repeated freezing and thawing!

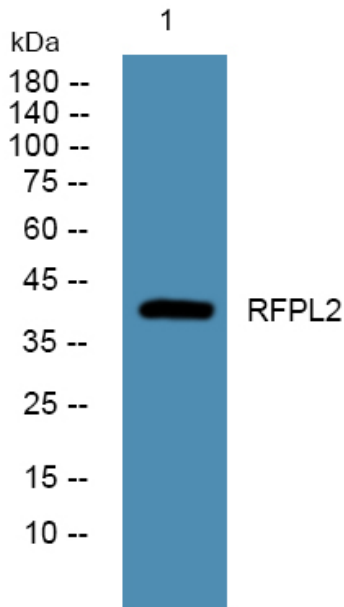
Nanjing BYabscience technology Co.,Ltd



Usage suggestions

This product can be used in immunological reaction related experiments. For more information, please consult technical personnel.

Products Images



Western blot analysis of lysates from DU145 cells, primary antibody was diluted at 1:1000, 4° over night