



RRAS2 Polyclonal Antibody

Catalog No	BYab-06063
Isotype	IgG
Reactivity	Human;Mouse
Applications	WB;ELISA
Gene Name	RRAS2 TC21
Protein Name	Ras-related protein R-Ras2 (Ras-like protein TC21) (Teratocarcinoma oncogene)
Immunogen	Synthesized peptide derived from human protein . at AA range: 90-170
Specificity	RRAS2 Polyclonal Antibody detects endogenous levels of protein.
Formulation	Liquid in PBS containing 50% glycerol, and 0.02% sodium azide.
Source	Polyclonal, Rabbit,IgG
Purification	The antibody was affinity-purified from rabbit antiserum by affinity-chromatography using epitope-specific immunogen.
Dilution	WB 1:500-2000 ELISA 1:5000-20000
Concentration	1 mg/ml
Purity	≥90%
Storage Stability	-20°C/1 year
Synonyms	
Observed Band	22kD
Cell Pathway	Cell membrane ; Lipid-anchor ; Cytoplasmic side. Golgi apparatus membrane ; Lipid-anchor .
Tissue Specificity	Ubiquitously present in all tissues examined, with the highest levels in heart, placenta, and skeletal muscle. Moderate levels in lung and liver; low levels in brain, kidney, and pancreas.
Function	disease:Defects in RRAS2 are associated with ovarian cancer [MIM:167000]. Ovarian cancer is the leading cause of death from gynecologic malignancy. It is characterized by advanced presentation with loco-regional dissemination in the peritoneal cavity and the rare incidence of visceral metastases. These typical features relate to the biology of the disease, which is a principal determinant of outcome.,function:It is a plasma membrane-associated GTP-binding protein with GTPase activity. Might transduce growth inhibitory signals across the cell membrane, exerting its effect through an effector shared with the Ras proteins but in an antagonistic fashion.,PTM:May be post-translationally modified by both palmitoylation and polyisoprenylation.,similarity:Belongs to the small GTPase

Nanjing BYabscience technology Co.,Ltd



superfamily. Ras family.,subcellular location:Inner surface of plasma membrane possibly with attachment requiring

Background

This gene encodes a member of the R-Ras subfamily of Ras-like small GTPases. The encoded protein associates with the plasma membrane and may function as a signal transducer. This protein may play an important role in activating signal transduction pathways that control cell proliferation. Mutations in this gene are associated with the growth of certain tumors. Pseudogenes of this gene are found on chromosomes 1 and 2. Alternate splicing results in multiple transcript variants. [provided by RefSeq, Apr 2010],

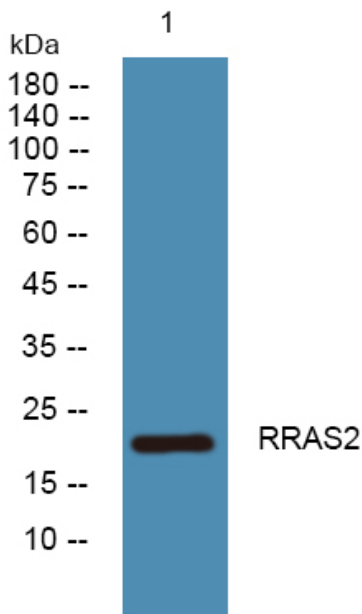
matters needing attention

Avoid repeated freezing and thawing!

Usage suggestions

This product can be used in immunological reaction related experiments. For more information, please consult technical personnel.

Products Images



Western blot analysis of lysates from SH-SY5Y cells, primary antibody was diluted at 1:1000, 4° over night