



# RALB Polyclonal Antibody

<b>Catalog No</b>	BYab-06062
<b>Isotype</b>	IgG
<b>Reactivity</b>	Human;Mouse;Rat
<b>Applications</b>	WB;ELISA
<b>Gene Name</b>	RALB
<b>Protein Name</b>	Ras-related protein Ral-B
<b>Immunogen</b>	Synthesized peptide derived from human protein . at AA range: 80-160
<b>Specificity</b>	RALB Polyclonal Antibody detects endogenous levels of protein.
<b>Formulation</b>	Liquid in PBS containing 50% glycerol, and 0.02% sodium azide.
<b>Source</b>	Polyclonal, Rabbit,IgG
<b>Purification</b>	The antibody was affinity-purified from rabbit antiserum by affinity-chromatography using epitope-specific immunogen.
<b>Dilution</b>	WB 1:500-2000 ELISA 1:5000-20000
<b>Concentration</b>	1 mg/ml
<b>Purity</b>	≥90%
<b>Storage Stability</b>	-20°C/1 year
<b>Synonyms</b>	
<b>Observed Band</b>	22kD
<b>Cell Pathway</b>	Cell membrane ; Lipid-anchor ; Cytoplasmic side . Midbody . During late cytokinesis, enriched at the midbody. .
<b>Tissue Specificity</b>	Brain,Caudate nucleus,Lung,Retina,
<b>Function</b>	similarity:Belongs to the small GTPase superfamily. Ras family.,subunit:Interacts with EXOC8. Interacts with RALBP1 via its effector domain.,
<b>Background</b>	RAS like proto-oncogene B(RALB) Homo sapiens This gene encodes a GTP-binding protein that belongs to the small GTPase superfamily and Ras family of proteins. GTP-binding proteins mediate the transmembrane signaling initiated by the occupancy of certain cell surface receptors. [provided by RefSeq, Jul 2008],
<b>matters needing attention</b>	Avoid repeated freezing and thawing!

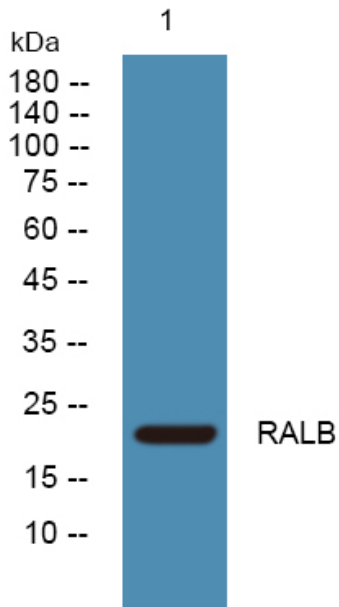
Nanjing BYabscience technology Co.,Ltd



### Usage suggestions

This product can be used in immunological reaction related experiments. For more information, please consult technical personnel.

## Products Images



Western blot analysis of lysates from Jarkat cells, primary antibody was diluted at 1:1000, 4° over night