



RAB9B Polyclonal Antibody

Catalog No	BYab-06061
Isotype	IgG
Reactivity	Human;Mouse
Applications	WB;ELISA
Gene Name	RAB9B RAB9L
Protein Name	Ras-related protein Rab-9B (Rab-9-like protein) (Rab-9L)
Immunogen	Synthesized peptide derived from human protein . at AA range: 80-160
Specificity	RAB9B Polyclonal Antibody detects endogenous levels of protein.
Formulation	Liquid in PBS containing 50% glycerol, and 0.02% sodium azide.
Source	Polyclonal, Rabbit,IgG
Purification	The antibody was affinity-purified from rabbit antiserum by affinity-chromatography using epitope-specific immunogen.
Dilution	WB 1:500-2000 ELISA 1:5000-20000
Concentration	1 mg/ml
Purity	≥90%
Storage Stability	-20°C/1 year
Synonyms	
Observed Band	22kD
Cell Pathway	Cell membrane ; Lipid-anchor ; Cytoplasmic side . Cytoplasmic vesicle, phagosome . Cytoplasmic vesicle, phagosome membrane ; Lipid-anchor ; Cytoplasmic side . Recruited to phagosomes containing S.aureus or M.tuberculosis.
Tissue Specificity	Ubiquitous.
Function	function:Involved in the transport of proteins between the endosomes and the trans Golgi network.,similarity:Belongs to the small GTPase superfamily. Rab family.,tissue specificity:Ubiquitous.,
Background	This gene encodes a member of a subfamily of RAS small guanosine triphosphate (GTP)-binding proteins that regulate membrane trafficking. The encoded protein may be involved in endosome-to-Golgi transport. [provided by RefSeq, Jan 2010],

Nanjing BYabscience technology Co.,Ltd



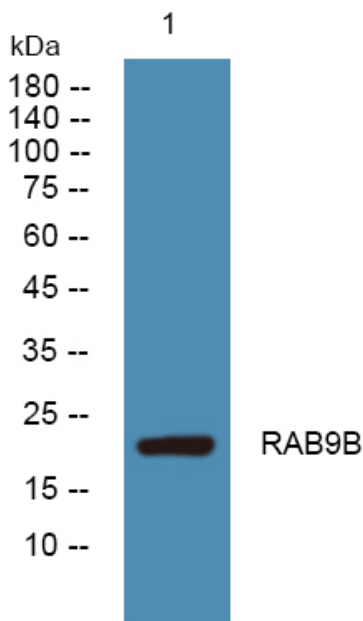
matters needing attention

Avoid repeated freezing and thawing!

Usage suggestions

This product can be used in immunological reaction related experiments. For more information, please consult technical personnel.

Products Images



Western blot analysis of lysates from Jarkat cells, primary antibody was diluted at 1:1000, 4° over night