



# RAB9A Polyclonal Antibody

<b>Catalog No</b>	BYab-06060
<b>Isotype</b>	IgG
<b>Reactivity</b>	Human;Rat;Mouse
<b>Applications</b>	WB;ELISA
<b>Gene Name</b>	RAB9A RAB9
<b>Protein Name</b>	Ras-related protein Rab-9A
<b>Immunogen</b>	Synthesized peptide derived from human protein . at AA range: 80-160
<b>Specificity</b>	RAB9A Polyclonal Antibody detects endogenous levels of protein.
<b>Formulation</b>	Liquid in PBS containing 50% glycerol, and 0.02% sodium azide.
<b>Source</b>	Polyclonal, Rabbit,IgG
<b>Purification</b>	The antibody was affinity-purified from rabbit antiserum by affinity-chromatography using epitope-specific immunogen.
<b>Dilution</b>	WB 1:500-2000 ELISA 1:5000-20000
<b>Concentration</b>	1 mg/ml
<b>Purity</b>	≥90%
<b>Storage Stability</b>	-20°C/1 year
<b>Synonyms</b>	
<b>Observed Band</b>	22kD
<b>Cell Pathway</b>	Cell membrane ; Lipid-anchor ; Cytoplasmic side . Endoplasmic reticulum membrane . Golgi apparatus membrane . Late endosome . Cytoplasmic vesicle, phagosome membrane ; Lipid-anchor ; Cytoplasmic side . Cytoplasmic vesicle, phagosome . Cytoplasmic vesicle membrane . Melanosome . Colocalizes with OSBPL1A at the late endosome (PubMed:16176980). Recruited to phagosomes containing S.aureus or M.tuberculosis (PubMed:21255211). .
<b>Tissue Specificity</b>	Brain,Epithelium,Muscle,
<b>Function</b>	function:Involved in the transport of proteins between the endosomes and the trans Golgi network.,similarity:Belongs to the small GTPase superfamily. Rab family.,
<b>Background</b>	function:Involved in the transport of proteins between the endosomes and the trans Golgi network.,similarity:Belongs to the small GTPase superfamily. Rab family.,

Nanjing BYabscience technology Co.,Ltd



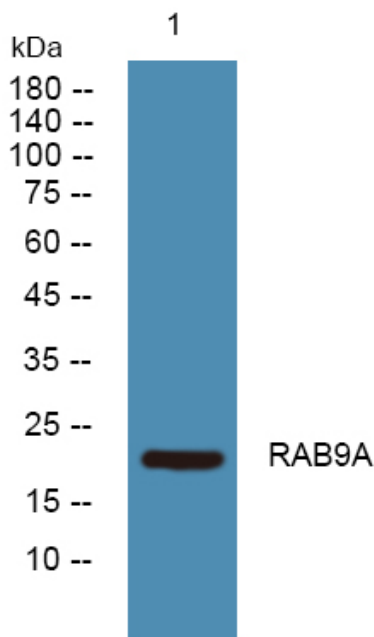
**matters needing attention**

Avoid repeated freezing and thawing!

**Usage suggestions**

This product can be used in immunological reaction related experiments. For more information, please consult technical personnel.

**Products Images**



Western blot analysis of lysates from U2OS cells, primary antibody was diluted at 1:1000, 4° over night