



# RAB8A Polyclonal Antibody

<b>Catalog No</b>	BYab-06058
<b>Isotype</b>	IgG
<b>Reactivity</b>	Human;Mouse;Rat
<b>Applications</b>	WB;ELISA
<b>Gene Name</b>	RAB8A MEL RAB8
<b>Protein Name</b>	Ras-related protein Rab-8A (Oncogene c-mel)
<b>Immunogen</b>	Synthesized peptide derived from human protein . at AA range: 120-200
<b>Specificity</b>	RAB8A Polyclonal Antibody detects endogenous levels of protein.
<b>Formulation</b>	Liquid in PBS containing 50% glycerol, and 0.02% sodium azide.
<b>Source</b>	Polyclonal, Rabbit,IgG
<b>Purification</b>	The antibody was affinity-purified from rabbit antiserum by affinity-chromatography using epitope-specific immunogen.
<b>Dilution</b>	WB 1:500-2000 ELISA 1:5000-20000
<b>Concentration</b>	1 mg/ml
<b>Purity</b>	≥90%
<b>Storage Stability</b>	-20°C/1 year
<b>Synonyms</b>	
<b>Observed Band</b>	22kD
<b>Cell Pathway</b>	Cell membrane ; Lipid-anchor ; Cytoplasmic side . Golgi apparatus . Recycling endosome membrane . Cell projection, cilium . Cytoplasmic vesicle, phagosome . Cytoplasmic vesicle, phagosome membrane ; Lipid-anchor ; Cytoplasmic side . Cytoplasm, cytoskeleton, microtubule organizing center, centrosome, centriole . Cytoplasm, cytoskeleton, cilium basal body . Midbody . Cytoplasm . Cytoplasm, cytoskeleton, cilium axoneme . Colocalizes with OPTN at the Golgi complex and in vesicular structures close to the plasma membrane (PubMed:15837803). In the GDP-bound form, present in the perinuclear region (PubMed:12221131). Shows a polarized distribution to distal regions of cell protrusions in the GTP-bound form (PubMed:12221131). Colocalizes with PARD3, PRKCI, EXOC5, OCLN, PODXL and RAB11A in apical me
<b>Tissue Specificity</b>	Brain,Epithelium,Platelet,Skin,
<b>Function</b>	function:May be involved in vesicular trafficking and neurotransmitter release.,similarity:Belongs to the small GTPase superfamily. Rab family.,subunit:Interacts with MAP4K2 and SYTL4. Interacts with SGSM1 and

**Nanjing BYabscience technology Co.,Ltd**



SGSM3.,

### Background

The protein encoded by this gene is a member of the RAS superfamily which are small GTP/GDP-binding proteins with an average size of 200 amino acids. The RAS-related proteins of the RAB/YPT family may play a role in the transport of proteins from the endoplasmic reticulum to the Golgi and the plasma membrane. This protein shares 97%, 96%, and 51% similarity with the dog RAB8, mouse MEL, and mouse YPT1 proteins, respectively and contains the 4 GTP/GDP-binding sites that are present in all the RAS proteins. The putative effector-binding site of this protein is similar to that of the RAB/YPT proteins. However, this protein contains a C-terminal CAAX motif that is characteristic of many RAS superfamily members but which is not found in YPT1 and the majority of RAB proteins. Although this gene was isolated as a transforming gene from a melanoma cell line, no linkage between MEL and malign

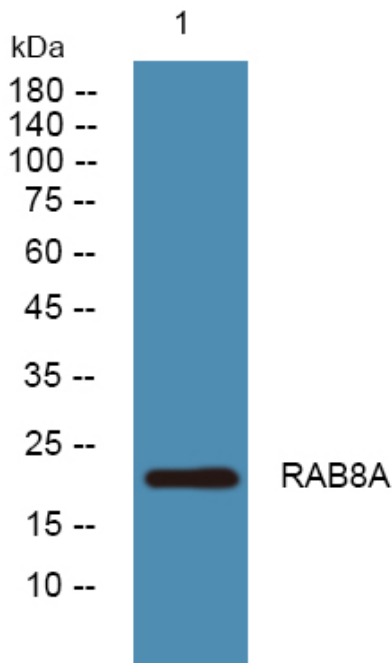
### matters needing attention

Avoid repeated freezing and thawing!

### Usage suggestions

This product can be used in immunological reaction related experiments. For more information, please consult technical personnel.

## Products Images



Nanjing BYabscience technology Co.,Ltd