



RAB43 Polyclonal Antibody

Catalog No	BYab-06055
Isotype	IgG
Reactivity	Human;Rat;Mouse;
Applications	WB;ELISA
Gene Name	RAB43 RAB41
Protein Name	Ras-related protein Rab-43 (Ras-related protein Rab-41)
Immunogen	Synthesized peptide derived from human protein . at AA range: 90-170
Specificity	RAB43 Polyclonal Antibody detects endogenous levels of protein.
Formulation	Liquid in PBS containing 50% glycerol, and 0.02% sodium azide.
Source	Polyclonal, Rabbit,IgG
Purification	The antibody was affinity-purified from rabbit antiserum by affinity-chromatography using epitope-specific immunogen.
Dilution	WB 1:500-2000 ELISA 1:5000-20000
Concentration	1 mg/ml
Purity	≥90%
Storage Stability	-20°C/1 year
Synonyms	
Observed Band	23kD
Cell Pathway	Cytoplasmic vesicle, phagosome . Cytoplasmic vesicle, phagosome membrane ; Lipid-anchor ; Cytoplasmic side . Golgi apparatus . Golgi apparatus, trans-Golgi network membrane ; Lipid-anchor . Golgi apparatus, trans-Golgi network . Recruited to phagosomes containing S.aureus or M.tuberculosis (PubMed:21255211). .
Tissue Specificity	Widely expressed in brain, testis, lung, heart, ovary, colon, kidney, uterus and spleen but not in liver.
Function	similarity:Belongs to the small GTPase superfamily. Rab family.,tissue specificity:Widely expressed in brain, testis, lung, heart, ovary, colon, kidney, uterus and spleen but not in liver.,
Background	similarity:Belongs to the small GTPase superfamily. Rab family.,tissue specificity:Widely expressed in brain, testis, lung, heart, ovary, colon, kidney, uterus and spleen but not in liver.,

Nanjing BYabscience technology Co.,Ltd



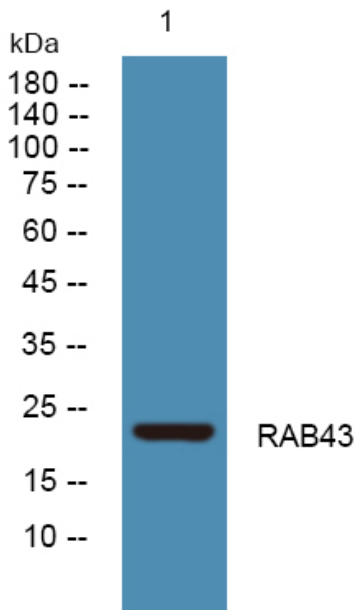
matters needing attention

Avoid repeated freezing and thawing!

Usage suggestions

This product can be used in immunological reaction related experiments. For more information, please consult technical personnel.

Products Images



Western blot analysis of lysates from K562 cells, primary antibody was diluted at 1:1000, 4° over night