



RB39A Polyclonal Antibody

Catalog No	BYab-06050
Isotype	IgG
Reactivity	Human;Mouse
Applications	WB;ELISA
Gene Name	RAB39A RAB39
Protein Name	Ras-related protein Rab-39A (Rab-39)
Immunogen	Synthesized peptide derived from human protein . at AA range: 50-130
Specificity	RB39A Polyclonal Antibody detects endogenous levels of protein.
Formulation	Liquid in PBS containing 50% glycerol, and 0.02% sodium azide.
Source	Polyclonal, Rabbit,IgG
Purification	The antibody was affinity-purified from rabbit antiserum by affinity-chromatography using epitope-specific immunogen.
Dilution	WB 1:500-2000 ELISA 1:5000-20000
Concentration	1 mg/ml
Purity	≥90%
Storage Stability	-20°C/1 year
Synonyms	
Observed Band	23kD
Cell Pathway	Cell membrane ; Lipid-anchor ; Cytoplasmic side . Cytoplasmic vesicle, phagosome . Cytoplasmic vesicle, phagosome membrane ; Lipid-anchor ; Cytoplasmic side . Lysosome . Recruited to phagosomes containing S.aureus or M.tuberculosis.
Tissue Specificity	Brain,
Function	function:May be involved in vesicular trafficking.,similarity:Belongs to the small GTPase superfamily. Rab family.,
Background	function:May be involved in vesicular trafficking.,similarity:Belongs to the small GTPase superfamily. Rab family.,
matters needing attention	Avoid repeated freezing and thawing!

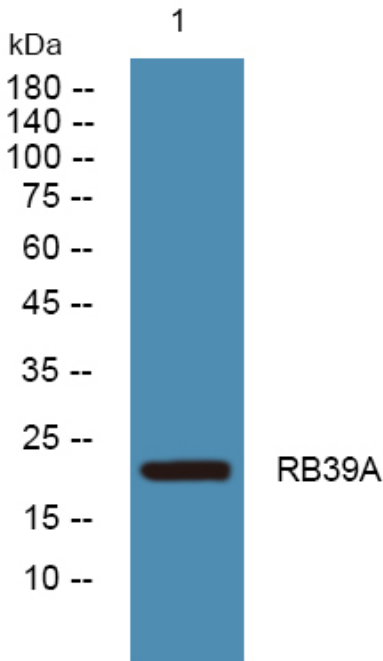
Nanjing BYabscience technology Co.,Ltd



Usage suggestions

This product can be used in immunological reaction related experiments. For more information, please consult technical personnel.

Products Images



Western blot analysis of lysates from DU145 cells, primary antibody was diluted at 1:1000, 4° over night