



RB33B Polyclonal Antibody

Catalog No	BYab-06048
Isotype	IgG
Reactivity	Human;Mouse
Applications	WB;ELISA
Gene Name	RAB33B
Protein Name	Ras-related protein Rab-33B
Immunogen	Synthesized peptide derived from human protein . at AA range: 100-180
Specificity	RB33B Polyclonal Antibody detects endogenous levels of protein.
Formulation	Liquid in PBS containing 50% glycerol, and 0.02% sodium azide.
Source	Polyclonal, Rabbit,IgG
Purification	The antibody was affinity-purified from rabbit antiserum by affinity-chromatography using epitope-specific immunogen.
Dilution	WB 1:500-2000 ELISA 1:5000-20000
Concentration	1 mg/ml
Purity	≥90%
Storage Stability	-20°C/1 year
Synonyms	
Observed Band	25kD
Cell Pathway	Golgi apparatus membrane ; Lipid-anchor . Golgi apparatus, cis-Golgi network . Under starvation conditions punctate RAB33B-positive structures are often observed in the cytoplasm. .
Tissue Specificity	Brain,Testis,Tongue,
Function	function:Protein transport. Probably involved in vesicular traffic.,similarity:Belongs to the small GTPase superfamily. Rab family.,
Background	This gene encodes a small GTP-binding protein of the Rab GTPase family, whose members function in vesicle transport during protein secretion and endocytosis. Rab GTPases are active, membrane-associated proteins that recruit effector proteins in the GTP-bound state and inactive cytosolic proteins when in a GDP-bound state. The protein encoded by this gene is ubiquitously expressed and has been implicated in Golgi to endoplasmic reticulum cycling of Golgi enzymes. In addition, this protein regulates Golgi homeostasis and coordinates intra-Golgi retrograde trafficking. Allelic variants in this gene have been

Nanjing BYabscience technology Co.,Ltd



associated with Dyggve-Melchior-Clausen syndrome and Smith-McCort dysplasia 2, which are autosomal recessive spondyloepimetaphyseal dysplasias characterized by skeletal abnormalities. [provided by RefSeq, Sep 2016],

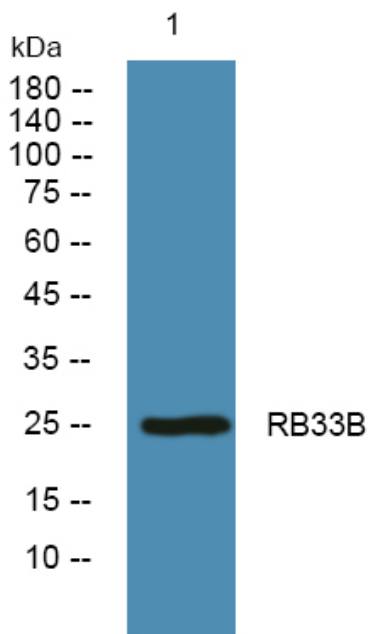
matters needing attention

Avoid repeated freezing and thawing!

Usage suggestions

This product can be used in immunological reaction related experiments. For more information, please consult technical personnel.

Products Images



Western blot analysis of lysates from A431 cells, primary antibody was diluted at 1:1000, 4° over night