



RAB1A Polyclonal Antibody

Catalog No	BYab-06040
Isotype	IgG
Reactivity	Human;Rat;Mouse
Applications	WB;ELISA
Gene Name	RAB1A RAB1
Protein Name	Ras-related protein Rab-1A (YPT1-related protein)
Immunogen	Synthesized peptide derived from human protein . at AA range: 50-130
Specificity	RAB1A Polyclonal Antibody detects endogenous levels of protein.
Formulation	Liquid in PBS containing 50% glycerol, and 0.02% sodium azide.
Source	Polyclonal, Rabbit,IgG
Purification	The antibody was affinity-purified from rabbit antiserum by affinity-chromatography using epitope-specific immunogen.
Dilution	WB 1:500-2000 ELISA 1:5000-20000
Concentration	1 mg/ml
Purity	≥90%
Storage Stability	-20°C/1 year
Synonyms	
Observed Band	22kD
Cell Pathway	Golgi apparatus . Endoplasmic reticulum . Early endosome . Cytoplasm, cytosol . Membrane . Melanosome . Alternates between membrane-associated and cytosolic forms. .
Tissue Specificity	Brain,Colon,Placenta,Platelet,Tongue,
Function	function:Probably required for transit of protein from the ER through Golgi compartment. Binds GTP and GDP and possesses intrinsic GTPase activity.,PTM:Phosphorylated by CDC2 kinase during mitosis.,similarity:Belongs to the small GTPase superfamily. Rab family.,subunit:May interact with YIPF5.,
Background	This gene encodes a member of the Ras superfamily of GTPases. Members of the gene family cycle between inactive GDP-bound and active GTP-bound forms. This small GTPase controls vesicle traffic from the endoplasmic reticulum to the Golgi apparatus. Multiple alternatively spliced transcript variants have been identified for this gene which encode different protein isoforms. [provided by RefSeq, Oct 2008],

Nanjing BYabscience technology Co.,Ltd



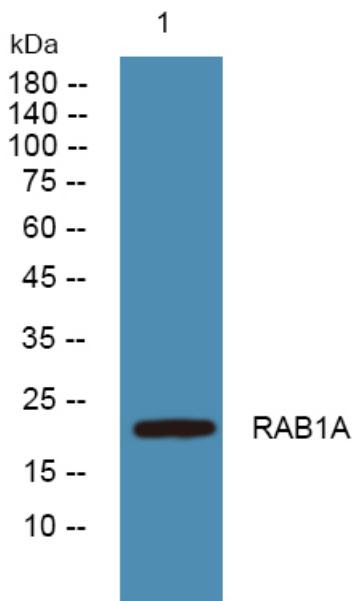
matters needing attention

Avoid repeated freezing and thawing!

Usage suggestions

This product can be used in immunological reaction related experiments. For more information, please consult technical personnel.

Products Images



Western blot analysis of lysates from DU145 cells, primary antibody was diluted at 1:1000, 4° over night