



RAB17 Polyclonal Antibody

Catalog No	BYab-06038
Isotype	IgG
Reactivity	Human;Mouse
Applications	WB;ELISA
Gene Name	RAB17
Protein Name	Ras-related protein Rab-17
Immunogen	Synthesized peptide derived from human protein . at AA range: 50-130
Specificity	RAB17 Polyclonal Antibody detects endogenous levels of protein.
Formulation	Liquid in PBS containing 50% glycerol, and 0.02% sodium azide.
Source	Polyclonal, Rabbit,IgG
Purification	The antibody was affinity-purified from rabbit antiserum by affinity-chromatography using epitope-specific immunogen.
Dilution	WB 1:500-2000 ELISA 1:5000-20000
Concentration	1 mg/ml
Purity	≥90%
Storage Stability	-20°C/1 year
Synonyms	
Observed Band	23kD
Cell Pathway	Recycling endosome membrane ; Lipid-anchor ; Cytoplasmic side . Melanosome . Cell projection, dendrite . May also localize at the basolateral and apical plasma membrane. In neurons, localizes to the cell body and dendritic shaft and spine. .
Tissue Specificity	Expressed in melanocytes (at protein level).
Function	function:Might be involved in transcellular transport.,similarity:Belongs to the small GTPase superfamily. Rab family.,
Background	The Rab subfamily of small GTPases plays an important role in the regulation of membrane trafficking. RAB17 is an epithelial cell-specific GTPase (Lutcke et al., 1993 [PubMed 8486736]).[supplied by OMIM, Oct 2009],
matters needing attention	Avoid repeated freezing and thawing!

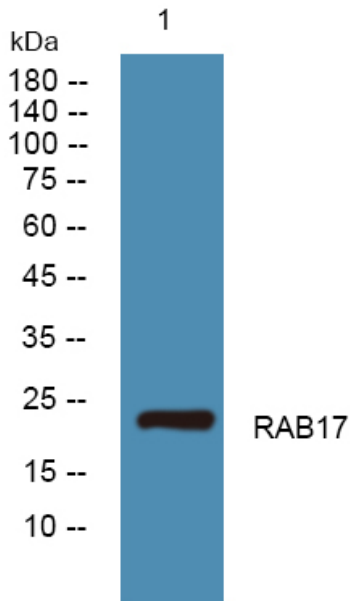
Nanjing BYabscience technology Co.,Ltd



Usage suggestions

This product can be used in immunological reaction related experiments. For more information, please consult technical personnel.

Products Images



Western blot analysis of lysates from U2OS cells, primary antibody was diluted at 1:1000, 4° over night