



RAB13 Polyclonal Antibody

Catalog No	BYab-06036
Isotype	IgG
Reactivity	Human;Rat;Mouse
Applications	WB;ELISA
Gene Name	RAB13 GIG4
Protein Name	Ras-related protein Rab-13 (Cell growth-inhibiting gene 4 protein)
Immunogen	Synthesized peptide derived from human protein . at AA range: 40-120
Specificity	RAB13 Polyclonal Antibody detects endogenous levels of protein.
Formulation	Liquid in PBS containing 50% glycerol, and 0.02% sodium azide.
Source	Polyclonal, Rabbit,IgG
Purification	The antibody was affinity-purified from rabbit antiserum by affinity-chromatography using epitope-specific immunogen.
Dilution	WB 1:500-2000 ELISA 1:5000-20000
Concentration	1 mg/ml
Purity	≥90%
Storage Stability	-20°C/1 year
Synonyms	
Observed Band	22kD
Cell Pathway	Cell membrane ; Lipid-anchor ; Cytoplasmic side . Cytoplasmic vesicle membrane ; Lipid-anchor ; Cytoplasmic side . Cell junction, tight junction . Golgi apparatus, trans-Golgi network membrane . Recycling endosome membrane . Cell projection, lamellipodium . Tight junctions or associated with vesicles scattered throughout the cytoplasm in cells lacking tight junctions (PubMed:8294494). Relocalizes to the leading edge of lamellipodia in migrating endothelial cells (By similarity). .
Tissue Specificity	Detected in several types of epithelia, including intestine, kidney, liver and in endothelial cells.
Function	function:Could participate in polarized transport, in the assembly and/or the activity of tight junctions. ,similarity:Belongs to the small GTPase superfamily. Rab family. ,subcellular location:Cytoplasmic tight junctions or associated with vesicles scattered throughout the cytoplasm in cells lacking tight junctions. ,tissue specificity:Detected in several types of epithelia, including intestine, kidney, liver and in endothelial cells. ,

Nanjing BYabscience technology Co.,Ltd



Background

This gene is a member of the Rab family of small G proteins and plays a role in regulating membrane trafficking between trans-Golgi network (TGN) and recycling endosomes (RE). The encoded protein is involved in the assembly of tight junctions, which are components of the apical junctional complex (AJC) of epithelial cells. The AJC plays a role in forming a barrier between luminal contents and the underlying tissue. Additional functions associated with the protein include endocytic recycling of occludin, regulation of epithelial cell scattering, neuronal regeneration and regulation of neurite outgrowth. Alternately spliced transcript variants have been observed for this gene. A pseudogene associated with this gene is located on chromosome 12. [provided by RefSeq, Jan 2013],

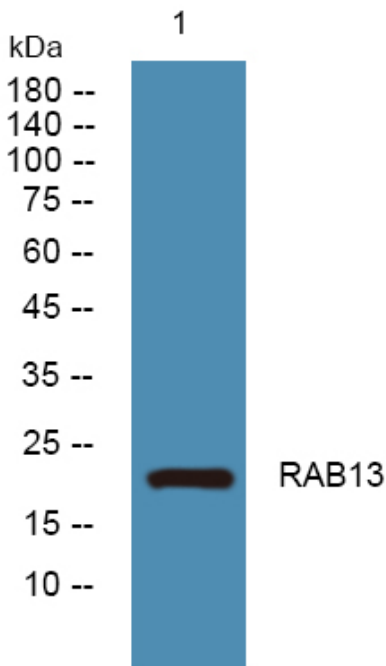
matters needing attention

Avoid repeated freezing and thawing!

Usage suggestions

This product can be used in immunological reaction related experiments. For more information, please consult technical personnel.

Products Images



Western blot analysis of lysates from DU145 cells, primary antibody was diluted at 1:1000, 4° over night