



RAC3 Polyclonal Antibody

Catalog No	BYab-06034
Isotype	IgG
Reactivity	Human;Mouse
Applications	WB;ELISA
Gene Name	RAC3
Protein Name	Ras-related C3 botulinum toxin substrate 3 (p21-Rac3)
Immunogen	Synthesized peptide derived from human protein . at AA range: 80-160
Specificity	RAC3 Polyclonal Antibody detects endogenous levels of protein.
Formulation	Liquid in PBS containing 50% glycerol, and 0.02% sodium azide.
Source	Polyclonal, Rabbit,IgG
Purification	The antibody was affinity-purified from rabbit antiserum by affinity-chromatography using epitope-specific immunogen.
Dilution	WB 1:500-2000 ELISA 1:5000-20000
Concentration	1 mg/ml
Purity	≥90%
Storage Stability	-20°C/1 year
Synonyms	
Observed Band	21kD
Cell Pathway	Cytoplasm. Endomembrane system. Cell projection, lamellipodium. Cytoplasm, perinuclear region. Cell membrane. Cytoplasm, cytoskeleton. Membrane-associated when activated. Colocalizes with NRBP to endomembranes and at the cell periphery in lamellipodia. Colocalized with CIB1 in the perinuclear area and at the cell periphery.
Tissue Specificity	Highest levels in brain, also detected in heart, placenta and pancreas.
Function	function:Plasma membrane-associated small GTPase which cycles between an active GTP-bound and inactive GDP-bound state. In active state binds to a variety of effector proteins to regulate cellular responses, such as cell spreading and the formation of actin-based protusions including lamellipodia and membrane ruffles.,induction:Expression down-regulated in quiescent fibroblasts and clearly induced by serum stimulation.,similarity:Belongs to the small GTPase superfamily. Rho family.,subcellular location:Membrane-associated when activated. Co-localizes with NRBP to endomembranes and at the cell periphery in lamellipodia.,subunit:Interacts with the GEF protein DOCK7, which promotes the

Nanjing BYabscience technology Co.,Ltd



exchange between GDP and GTP, and therefore activates it. Interacts with C1D., tissue specificity: Highest levels in brain, also detected in heart, placenta and pancreas.,

Background

The protein encoded by this gene is a GTPase which belongs to the RAS superfamily of small GTP-binding proteins. Members of this superfamily appear to regulate a diverse array of cellular events, including the control of cell growth, cytoskeletal reorganization, and the activation of protein kinases. Alternative splicing results in multiple transcript variants. [provided by RefSeq, Oct 2015],

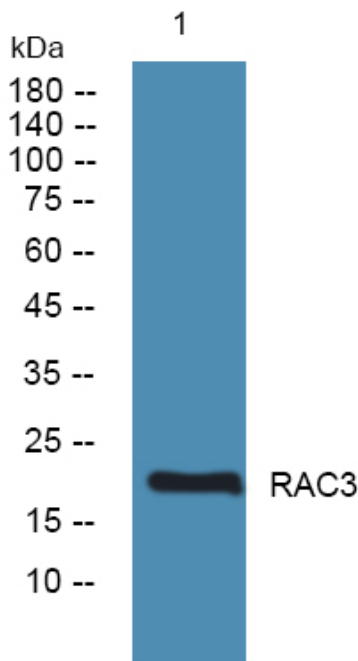
matters needing attention

Avoid repeated freezing and thawing!

Usage suggestions

This product can be used in immunological reaction related experiments. For more information, please consult technical personnel.

Products Images



Western blot analysis of lysates from A431 cells, primary antibody was diluted at 1:1000, 4° over night