



RAIN Polyclonal Antibody

Catalog No	BYab-06032
Isotype	IgG
Reactivity	Human;Rat;Mouse;
Applications	WB;ELISA
Gene Name	RASIP1
Protein Name	Ras-interacting protein 1 (Rain)
Immunogen	Synthesized peptide derived from human protein . at AA range: 620-700
Specificity	RAIN Polyclonal Antibody detects endogenous levels of protein.
Formulation	Liquid in PBS containing 50% glycerol, and 0.02% sodium azide.
Source	Polyclonal, Rabbit,IgG
Purification	The antibody was affinity-purified from rabbit antiserum by affinity-chromatography using epitope-specific immunogen.
Dilution	WB 1:500-2000 ELISA 1:5000-20000
Concentration	1 mg/ml
Purity	≥90%
Storage Stability	-20°C/1 year
Synonyms	
Observed Band	105kD
Cell Pathway	Cytoplasm, perinuclear region . Golgi apparatus, Golgi stack . Associated with perinuclear vesicles. Is recruited to Golgi stacks by activated HRAS.
Tissue Specificity	Highly expressed in heart. Detected at lower levels in placenta and pancreas.
Function	function:May act as effector for Golgi-bound HRAS and other Ras-like proteins. May promote HRAS-mediated transformation.,similarity:Contains 1 dilute domain.,similarity:Contains 1 Ras-associating domain.,subcellular location:Associated with perinuclear vesicles. Is recruited to Golgi stacks by activated HRAS.,subunit:Interacts with Ras family members that have been activated by GTP binding. Interacts with HRAS, RAP1A, RAP2, RRAS, RAF1 and RRAS2.,tissue specificity:Highly expressed in heart. Detected at lower levels in placenta and pancreas.,
Background	function:May act as effector for Golgi-bound HRAS and other Ras-like proteins. May promote HRAS-mediated transformation.,similarity:Contains 1 dilute domain.,similarity:Contains 1 Ras-associating domain.,subcellular

Nanjing BYabscience technology Co.,Ltd



location:Associated with perinuclear vesicles. Is recruited to Golgi stacks by activated HRAS.,subunit:Interacts with Ras family members that have been activated by GTP binding. Interacts with HRAS, RAP1A, RAP2, RRAS, RAF1 and RRAS2.,tissue specificity:Highly expressed in heart. Detected at lower levels in placenta and pancreas.,

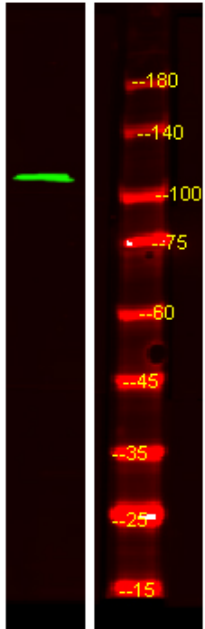
matters needing attention

Avoid repeated freezing and thawing!

Usage suggestions

This product can be used in immunological reaction related experiments. For more information, please consult technical personnel.

Products Images



Western Blot analysis of Hela lysis, using primary antibody at 1:1000 dilution. Secondary antibody(catalog#:RS23920) was diluted at 1:10000