



# RGF1B Polyclonal Antibody

<b>Catalog No</b>	BYab-06030
<b>Isotype</b>	IgG
<b>Reactivity</b>	Human;Mouse
<b>Applications</b>	WB;ELISA
<b>Gene Name</b>	RASGEF1B GPIG4
<b>Protein Name</b>	Ras-GEF domain-containing family member 1B (GPI gamma-4)
<b>Immunogen</b>	Synthesized peptide derived from human protein . at AA range: 410-490
<b>Specificity</b>	RGF1B Polyclonal Antibody detects endogenous levels of protein.
<b>Formulation</b>	Liquid in PBS containing 50% glycerol, and 0.02% sodium azide.
<b>Source</b>	Polyclonal, Rabbit,IgG
<b>Purification</b>	The antibody was affinity-purified from rabbit antiserum by affinity-chromatography using epitope-specific immunogen.
<b>Dilution</b>	WB 1:500-2000 ELISA 1:5000-20000
<b>Concentration</b>	1 mg/ml
<b>Purity</b>	≥90%
<b>Storage Stability</b>	-20°C/1 year
<b>Synonyms</b>	
<b>Observed Band</b>	52kD
<b>Cell Pathway</b>	Early endosome . Late endosome . Midbody . May shuttle between early and late endosomes (By similarity). Localizes to midbody at telophase. .
<b>Tissue Specificity</b>	Blood,Teratocarcinoma,
<b>Function</b>	function:Guanine nucleotide exchange factor (GEF) for Ras family proteins (in vitro).,induction:Up-regulated in monocytes stimulated with T.cruzi GPI-anchored mucins or bacterial lipopolysaccharide.,similarity:Contains 1 N-terminal Ras-GEF domain.,similarity:Contains 1 Ras-GEF domain.,
<b>Background</b>	function:Guanine nucleotide exchange factor (GEF) for Ras family proteins (in vitro).,induction:Up-regulated in monocytes stimulated with T.cruzi GPI-anchored mucins or bacterial lipopolysaccharide.,similarity:Contains 1 N-terminal Ras-GEF domain.,similarity:Contains 1 Ras-GEF domain.,
<b>matters needing attention</b>	Avoid repeated freezing and thawing!

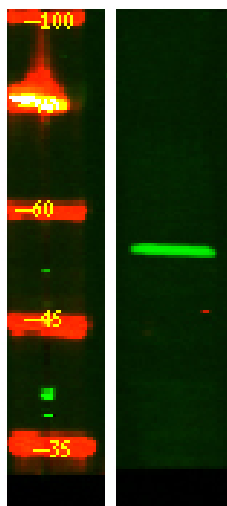
Nanjing BYabscience technology Co.,Ltd



### Usage suggestions

This product can be used in immunological reaction related experiments. For more information, please consult technical personnel.

## Products Images



Western Blot analysis of HeLa lysis, using primary antibody at 1:1000 dilution. Secondary antibody(catalog#:RS23920) was diluted at 1:10000