



RASF3 Polyclonal Antibody

Catalog No	BYab-06023
Isotype	IgG
Reactivity	Human;Mouse
Applications	WB;ELISA
Gene Name	RASSF3
Protein Name	Ras association domain-containing protein 3
Immunogen	Synthesized peptide derived from human protein . at AA range: 160-240
Specificity	RASF3 Polyclonal Antibody detects endogenous levels of protein.
Formulation	Liquid in PBS containing 50% glycerol, and 0.02% sodium azide.
Source	Polyclonal, Rabbit,IgG
Purification	The antibody was affinity-purified from rabbit antiserum by affinity-chromatography using epitope-specific immunogen.
Dilution	WB 1:500-2000 ELISA 1:5000-20000
Concentration	1 mg/ml
Purity	≥90%
Storage Stability	-20°C/1 year
Synonyms	
Observed Band	26kD
Cell Pathway	Cytoplasm . Cytoplasm, cytoskeleton . Localized to microtubules in vascular endothelial cells.
Tissue Specificity	Widely expressed.
Function	caution:Has been termed RASSF5 by Ref.1.,similarity:Contains 1 Ras-associating domain.,similarity:Contains 1 SARAH domain.,subcellular location:Localized to microtubules in vascular endothelial cells.,tissue specificity:Widely expressed.,
Background	The RAS oncogene (MIM 190020) is mutated in nearly one-third of all human cancers. Members of the RAS superfamily are plasma membrane GTP-binding proteins that modulate intracellular signal transduction pathways. A subfamily of RAS effectors, including RASSF3, share a RAS association (RA) domain.[supplied by OMIM, Jul 2003],

Nanjing BYabscience technology Co.,Ltd



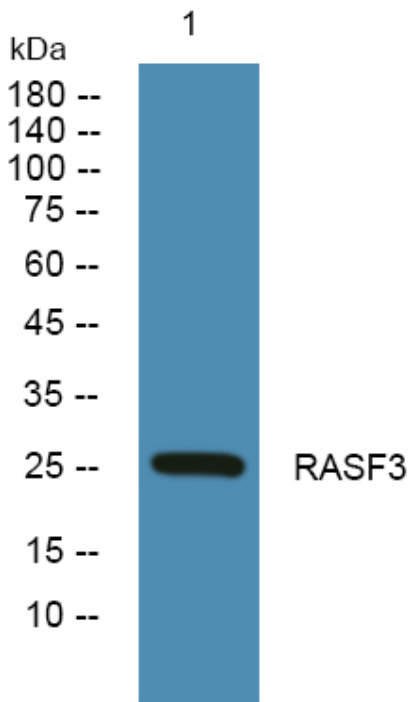
matters needing attention

Avoid repeated freezing and thawing!

Usage suggestions

This product can be used in immunological reaction related experiments. For more information, please consult technical personnel.

Products Images



Western blot analysis of lysates from K562 cells, primary antibody was diluted at 1:1000, 4° over night