



RANG Polyclonal Antibody

Catalog No	BYab-06017
Isotype	IgG
Reactivity	Human;Mouse
Applications	WB;ELISA
Gene Name	RANBP1
Protein Name	Ran-specific GTPase-activating protein (Ran-binding protein 1) (RanBP1)
Immunogen	Synthesized peptide derived from human protein . at AA range: 30-110
Specificity	RANG Polyclonal Antibody detects endogenous levels of protein.
Formulation	Liquid in PBS containing 50% glycerol, and 0.02% sodium azide.
Source	Polyclonal, Rabbit,IgG
Purification	The antibody was affinity-purified from rabbit antiserum by affinity-chromatography using epitope-specific immunogen.
Dilution	WB 1:500-2000 ELISA 1:5000-20000
Concentration	1 mg/ml
Purity	≥90%
Storage Stability	-20°C/1 year
Synonyms	
Observed Band	22kD
Cell Pathway	intracellular,nucleus,nuclear envelope,cytoplasm,centrosome,cell-cell adherens junction,axon cytoplasm,
Tissue Specificity	Blood,
Function	function:Inhibits GTP exchange on Ran. Forms a Ran-GTP-RANBP1 trimeric complex. Increase GTP hydrolysis induced by the Ran GTPase activating protein RANGAP1. May act in an intracellular signaling pathway which may control the progression through the cell cycle by regulating the transport of protein and nucleic acids across the nuclear membrane.,similarity:Belongs to the RANBP1 family.,similarity:Contains 1 RanBD1 domain.,
Background	This gene encodes a protein that forms a complex with Ras-related nuclear protein (Ran) and metabolizes guanoside triphosphate (GTP). This complex participates in the regulation of the cell cycle by controlling transport of proteins and nucleic acids into the nucleus. There are multiple pseudogenes for this gene on chromosomes 9, 12, 17, and X. Alternative splicing results in multiple transcript

Nanjing BYabscience technology Co.,Ltd



variants. [provided by RefSeq, Jul 2013],

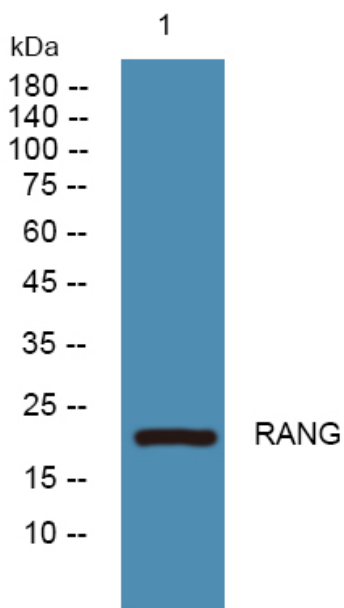
matters needing attention

Avoid repeated freezing and thawing!

Usage suggestions

This product can be used in immunological reaction related experiments. For more information, please consult technical personnel.

Products Images



Western blot analysis of lysates from SW480 cells, primary antibody was diluted at 1:1000, 4° over night