



GNDS Polyclonal Antibody

Catalog No	BYab-06012
Isotype	IgG
Reactivity	Human;Mouse;Rat
Applications	WB;ELISA
Gene Name	RALGDS KIAA1308 RGF
Protein Name	Ral guanine nucleotide dissociation stimulator (RalGDS) (Ral guanine nucleotide exchange factor) (RalGEF)
Immunogen	Synthesized peptide derived from human protein . at AA range: 130-210
Specificity	GNDS Polyclonal Antibody detects endogenous levels of protein.
Formulation	Liquid in PBS containing 50% glycerol, and 0.02% sodium azide.
Source	Polyclonal, Rabbit,IgG
Purification	The antibody was affinity-purified from rabbit antiserum by affinity-chromatography using epitope-specific immunogen.
Dilution	WB 1:500-2000 ELISA 1:5000-20000
Concentration	1 mg/ml
Purity	≥90%
Storage Stability	-20°C/1 year
Synonyms	
Observed Band	100kD
Cell Pathway	Cytoplasm . Nucleus . Localizes mainly in the peripheral region of the cytoplasmic membrane in oocytes and in preimplantation embryos until the 8-cell stage. Between the late 1-cell and the early 2-cell stages, nuclear localization becomes stronger. After the 4-cell stage, not detected in the nucleus. .
Tissue Specificity	Brain,Epithelium,Placenta,Primary B-Cells,Spleen,Thalamus,
Function	domain:The Ras-associating domain interacts with Ras.,function:Stimulates the dissociation of GDP from the Ras-related RalA and RalB GTPases which allows GTP binding and activation of the GTPases. Interacts and acts as an effector molecule for R-Ras, H-Ras, K-Ras, and Rap.,similarity:Contains 1 N-terminal Ras-GEF domain.,similarity:Contains 1 Ras-associating domain.,similarity:Contains 1 Ras-GEF domain.,subunit:Interacts with RIT1 and RIT2.,
Background	Guanine nucleotide dissociation stimulators (GDSs, or exchange factors), such as RALGDS, are effectors of Ras-related GTPases (see MIM 190020) that

Nanjing BYabscience technology Co.,Ltd



participate in signaling for a variety of cellular processes.[supplied by OMIM, Nov 2010],

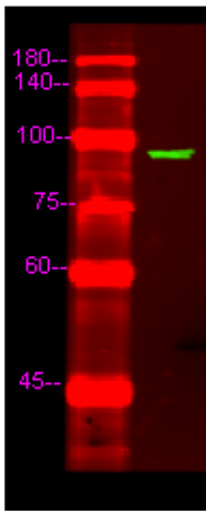
matters needing attention

Avoid repeated freezing and thawing!

Usage suggestions

This product can be used in immunological reaction related experiments. For more information, please consult technical personnel.

Products Images



Western Blot analysis of HeLa lysis, using primary antibody at 1:1000 dilution. Secondary antibody(catalog#:RS23920) was diluted at 1:10000

Nanjing BYabscience technology Co.,Ltd