



# R51A1 Polyclonal Antibody

<b>Catalog No</b>	BYab-06009
<b>Isotype</b>	IgG
<b>Reactivity</b>	Human;Mouse;
<b>Applications</b>	WB;ELISA
<b>Gene Name</b>	RAD51AP1 PIR51
<b>Protein Name</b>	RAD51-associated protein 1 (RAD51-interacting protein)
<b>Immunogen</b>	Synthesized peptide derived from human protein . at AA range: 90-170
<b>Specificity</b>	R51A1 Polyclonal Antibody detects endogenous levels of protein.
<b>Formulation</b>	Liquid in PBS containing 50% glycerol, and 0.02% sodium azide.
<b>Source</b>	Polyclonal, Rabbit,IgG
<b>Purification</b>	The antibody was affinity-purified from rabbit antiserum by affinity-chromatography using epitope-specific immunogen.
<b>Dilution</b>	WB 1:500-2000 ELISA 1:5000-20000
<b>Concentration</b>	1 mg/ml
<b>Purity</b>	≥90%
<b>Storage Stability</b>	-20°C/1 year
<b>Synonyms</b>	
<b>Observed Band</b>	38kD
<b>Cell Pathway</b>	Chromosome . Nucleus . Chromosome, telomere . Colocalizes with RAD51 to multiple nuclear foci (By similarity). Colocalizes with DMC1 on meiotic chromatin (By similarity). .
<b>Tissue Specificity</b>	Highly expressed in testis and thymus (PubMed:9396801). Lower levels in colon and small intestine (PubMed:9396801). Little or no expression in spleen, prostate, ovary and peripheral blood leukocytes (PubMed:9396801).
<b>Function</b>	alternative products:Additional isoforms seem to exist,function:May participate in a common DNA damage response pathway associated with the activation of homologous recombination and double-strand break repair. Binds to single and double stranded DNA, and is capable of aggregating DNA. Also binds RNA.,PTM:Phosphorylated upon DNA damage, probably by ATM or ATR.,subcellular location:Colocalizes with RAD51 to multiple nuclear foci.,subunit:Isoform 2 interacts with RAD51.,tissue specificity:Highly expressed in testis and thymus. Lower levels in colon and small intestine. Little or no expression in spleen, prostate, ovary and peripheral blood leukocytes.,

Nanjing BYabscience technology Co.,Ltd



### Background

alternative products:Additional isoforms seem to exist,function:May participate in a common DNA damage response pathway associated with the activation of homologous recombination and double-strand break repair. Binds to single and double stranded DNA, and is capable of aggregating DNA. Also binds RNA.,PTM:Phosphorylated upon DNA damage, probably by ATM or ATR.,subcellular location:Colocalizes with RAD51 to multiple nuclear foci.,subunit:Isoform 2 interacts with RAD51.,tissue specificity:Highly expressed in testis and thymus. Lower levels in colon and small intestine. Little or no expression in spleen, prostate, ovary and peripheral blood leukocytes.,

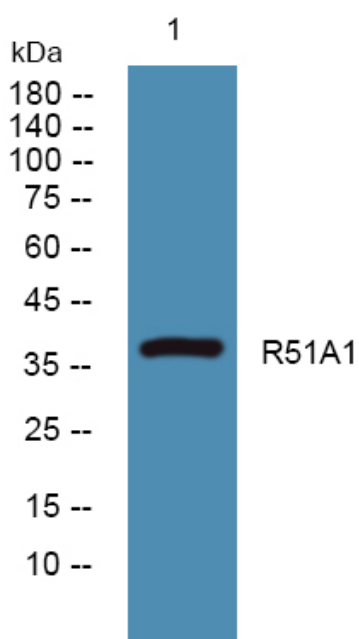
### matters needing attention

Avoid repeated freezing and thawing!

### Usage suggestions

This product can be used in immunological reaction related experiments. For more information, please consult technical personnel.

## Products Images



Western blot analysis of lysates from PC12 cells, primary antibody was diluted at 1:1000, 4° over night