



NSUN5 Polyclonal Antibody

Catalog No	BYab-05998
Isotype	IgG
Reactivity	Human;Mouse
Applications	WB;ELISA
Gene Name	NSUN5 WBSCR20 WBSCR20A
Protein Name	Putative methyltransferase NSUN5 (EC 2.1.1.-) (NOL1-related protein) (NOL1R) (NOL1/NOP2/Sun domain family member 5) (Williams-Beuren syndrome chromosomal region 20A protein)
Immunogen	Synthesized peptide derived from human protein . at AA range: 320-400
Specificity	NSUN5 Polyclonal Antibody detects endogenous levels of protein.
Formulation	Liquid in PBS containing 50% glycerol, and 0.02% sodium azide.
Source	Polyclonal, Rabbit,IgG
Purification	The antibody was affinity-purified from rabbit antiserum by affinity-chromatography using epitope-specific immunogen.
Dilution	WB 1:500-2000 ELISA 1:5000-20000
Concentration	1 mg/ml
Purity	≥90%
Storage Stability	-20°C/1 year
Synonyms	
Observed Band	47kD
Cell Pathway	Nucleus, nucleolus .
Tissue Specificity	Ubiquitous (PubMed:11978965, PubMed:12073013). Detected in placenta, heart and skeletal muscle (PubMed:11978965, PubMed:12073013).
Function	function:May have S-adenosyl-L-methionine-dependent methyl-transferase activity .,PTM:Isoform 2 is phosphorylated upon DNA damage, probably by ATM or ATR.,similarity:Belongs to the methyltransferase superfamily. RsmB/NOP family.,tissue specificity:Ubiquitous. Detected in placenta, heart and skeletal muscle.,
Background	This gene encodes a member of an evolutionarily conserved family of proteins that may function as methyltransferases. This gene is located in a larger region of chromosome 7 that is deleted in Williams-Beuren syndrome, a multisystem developmental disorder. There are two pseudogenes for this gene located in the same region of chromosome 7. Alternative splicing results in multiple transcript

Nanjing BYabscience technology Co.,Ltd



variants encoding different isoforms. [provided by RefSeq, Jul 2013],

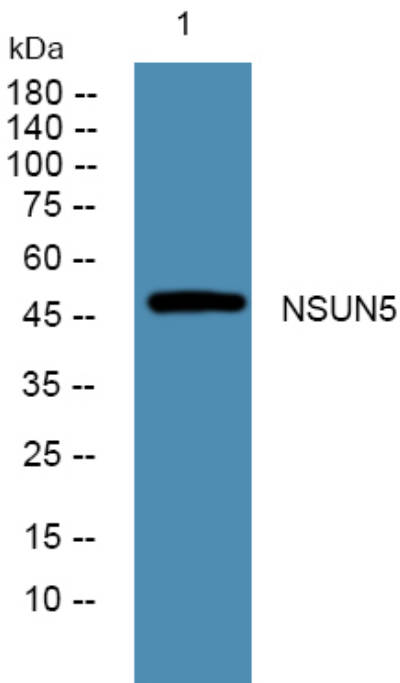
matters needing attention

Avoid repeated freezing and thawing!

Usage suggestions

This product can be used in immunological reaction related experiments. For more information, please consult technical personnel.

Products Images



Western blot analysis of lysates from PC12 cells, primary antibody was diluted at 1:1000, 4° over night