



SFTPD Polyclonal Antibody

| | |
|---------------------------|--|
| Catalog No | BYab-05997 |
| Isotype | IgG |
| Reactivity | Human;Mouse;Rat |
| Applications | WB;ELISA |
| Gene Name | SFTPD COLEC7 PSPD SFTP4 |
| Protein Name | Pulmonary surfactant-associated protein D (PSP-D) (SP-D) (Collectin-7) (Lung surfactant protein D) |
| Immunogen | Synthesized peptide derived from human protein . at AA range: 290-370 |
| Specificity | SFTPD Polyclonal Antibody detects endogenous levels of protein. |
| Formulation | Liquid in PBS containing 50% glycerol, and 0.02% sodium azide. |
| Source | Polyclonal, Rabbit,IgG |
| Purification | The antibody was affinity-purified from rabbit antiserum by affinity-chromatography using epitope-specific immunogen. |
| Dilution | WB 1:500-2000 ELISA 1:5000-20000 |
| Concentration | 1 mg/ml |
| Purity | ≥90% |
| Storage Stability | -20°C/1 year |
| Synonyms | |
| Observed Band | 41kD |
| Cell Pathway | Secreted, extracellular space, extracellular matrix. Secreted, extracellular space, surface film. |
| Tissue Specificity | Expressed in lung, brain, pancreas and adipose tissue (mainly mature adipocytes). |
| Function | function:Contributes to the lung's defense against inhaled microorganisms. May participate in the extracellular reorganization or turnover of pulmonary surfactant. Binds strongly maltose residues and to a lesser extent other alpha-glucosyl moieties.,miscellaneous:Pulmonary surfactant consists of 90% lipid and 10% protein. There are 4 surfactant-associated proteins: 2 collagenous, carbohydrate-binding glycoproteins (SP-A and SP-D) and 2 small hydrophobic proteins (SP-B and SP-C).,online information:Pulmonary surfactant protein SP-D,PTM:Hydroxylation on proline residues within the sequence motif, GXPG, is most likely to be 4-hydroxy as this fits the requirement for 4-hydroxylation in vertebrates.,PTM:The N-terminus is blocked.,similarity:Belongs to the SFTPD family.,similarity:Contains 1 C-type lectin domain.,similarity:Contains 1 |

Nanjing BYabscience technology Co.,Ltd



collagen-like domain.,subunit:Oligomeric complex of 4 set o

Background

The protein encoded by this gene is part of the innate immune response, protecting the lungs against inhaled microorganisms and chemicals. The encoded protein may also be involved in surfactant metabolism. [provided by RefSeq, Jul 2015],

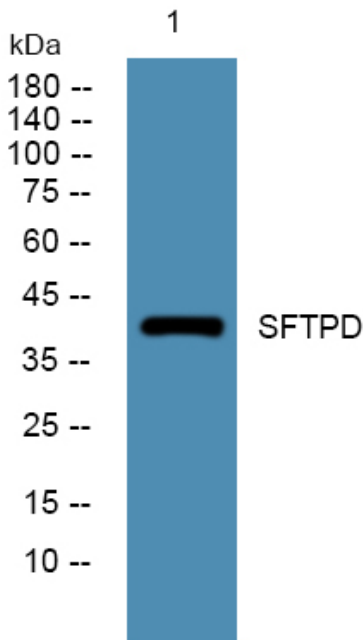
matters needing attention

Avoid repeated freezing and thawing!

Usage suggestions

This product can be used in immunological reaction related experiments. For more information, please consult technical personnel.

Products Images



Western blot analysis of lysates from Jarkat cells, primary antibody was diluted at 1:1000, 4° over night