



S10AD Polyclonal Antibody

Catalog No	BYab-05988
Isotype	IgG
Reactivity	Human;Mouse
Applications	WB;ELISA
Gene Name	S100A13
Protein Name	Protein S100-A13 (S100 calcium-binding protein A13)
Immunogen	Synthesized peptide derived from human protein . at AA range: 10-90
Specificity	S10AD Polyclonal Antibody detects endogenous levels of protein.
Formulation	Liquid in PBS containing 50% glycerol, and 0.02% sodium azide.
Source	Polyclonal, Rabbit,IgG
Purification	The antibody was affinity-purified from rabbit antiserum by affinity-chromatography using epitope-specific immunogen.
Dilution	WB 1:500-2000 ELISA 1:5000-20000
Concentration	1 mg/ml
Purity	≥90%
Storage Stability	-20°C/1 year
Synonyms	
Observed Band	10kD
Cell Pathway	Cytoplasm. Secreted. Secretion is mediated by exposure to stress and requires copper ions.
Tissue Specificity	Expressed in heart and skeletal muscle.
Function	similarity:Belongs to the S-100 family.,similarity:Contains 2 EF-hand domains.,tissue specificity:Expressed in heart and skeletal muscle.,
Background	The protein encoded by this gene is a member of the S100 family of proteins containing 2 EF-hand calcium-binding motifs. S100 proteins are localized in the cytoplasm and/or nucleus of a wide range of cells, and involved in the regulation of a number of cellular processes such as cell cycle progression and differentiation. S100 genes include at least 13 members which are located as a cluster on chromosome 1q21. This protein is widely expressed in various types of tissues with a high expression level in thyroid gland. In smooth muscle cells, this protein co-expresses with other family members in the nucleus and in stress fibers, suggesting diverse functions in signal transduction. Multiple alternatively

Nanjing BYabscience technology Co.,Ltd



spliced transcript variants encoding the same protein have been found for this gene. [provided by RefSeq, Jul 2008],

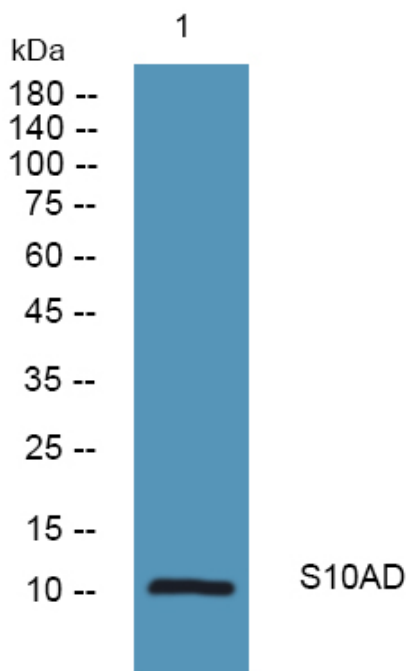
matters needing attention

Avoid repeated freezing and thawing!

Usage suggestions

This product can be used in immunological reaction related experiments. For more information, please consult technical personnel.

Products Images



Western blot analysis of lysates from DU145 cells, primary antibody was diluted at 1:1000, 4° over night