



IPP2L Polyclonal Antibody

Catalog No	BYab-05986
Isotype	IgG
Reactivity	Human;Rat;Mouse;
Applications	WB;ELISA
Gene Name	PPP1R2P1
Protein Name	Putative protein phosphatase inhibitor 2-like protein 1 (Protein phosphatase 1, regulatory subunit 2 pseudogene 1)
Immunogen	Synthesized peptide derived from human protein . at AA range: 130-210
Specificity	IPP2L Polyclonal Antibody detects endogenous levels of protein.
Formulation	Liquid in PBS containing 50% glycerol, and 0.02% sodium azide.
Source	Polyclonal, Rabbit,IgG
Purification	The antibody was affinity-purified from rabbit antiserum by affinity-chromatography using epitope-specific immunogen.
Dilution	WB 1:500-2000 ELISA 1:5000-20000
Concentration	1 mg/ml
Purity	≥90%
Storage Stability	-20°C/1 year
Synonyms	
Observed Band	22kD
Cell Pathway	protein phosphatase type 1 complex,
Tissue Specificity	
Function	polysaccharide metabolic process, glycogen metabolic process, monosaccharide metabolic process, glucose metabolic process, cellular glucan metabolic process, generation of precursor metabolites and energy, energy reserve metabolic process, regulation of phosphatase activity, energy derivation by oxidation of organic compounds, regulation of phosphate metabolic process, hexose metabolic process, regulation of dephosphorylation, regulation of phosphoprotein phosphatase activity, glucan metabolic process, cellular polysaccharide metabolic process, regulation of phosphorus metabolic process, regulation of hydrolase activity,
Background	PPP1R2P1 (Protein Phosphatase 1 Regulatory Inhibitor Subunit 2 Pseudogene 1) is a Pseudogene. GO annotations related to this gene include protein

Nanjing BYabscience technology Co.,Ltd



phosphatase inhibitor activity. Inhibitor of protein-phosphatase 1.

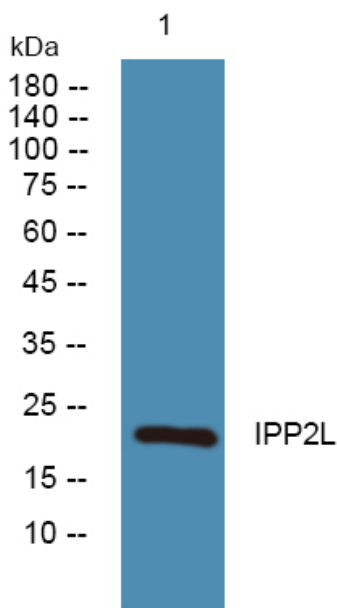
matters needing attention

Avoid repeated freezing and thawing!

Usage suggestions

This product can be used in immunological reaction related experiments. For more information, please consult technical personnel.

Products Images



Western blot analysis of lysates from HCT116 cells, primary antibody was diluted at 1:1000, 4° over night