



PRP8 Polyclonal Antibody

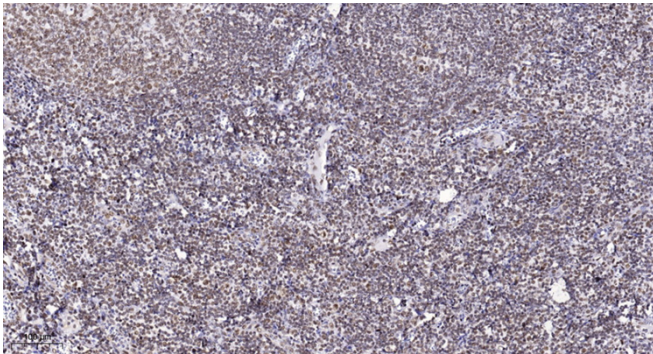
Catalog No	BYab-05970
Isotype	IgG
Reactivity	Human;Mouse
Applications	IHC;IF
Gene Name	PRPF8 PRPC8
Protein Name	Pre-mRNA-processing-splicing factor 8 (220 kDa U5 snRNP-specific protein) (PRP8 homolog) (Splicing factor Prp8) (p220)
Immunogen	Synthesized peptide derived from human protein . at AA range: 160-240
Specificity	PRP8 Polyclonal Antibody detects endogenous levels of protein.
Formulation	Liquid in PBS containing 50% glycerol, and 0.02% sodium azide.
Source	Polyclonal, Rabbit,IgG
Purification	The antibody was affinity-purified from rabbit antiserum by affinity-chromatography using epitope-specific immunogen.
Dilution	IHC-p 1:50-300. IF 1:50-200
Concentration	1 mg/ml
Purity	≥90%
Storage Stability	-20°C/1 year
Synonyms	
Observed Band	256kD
Cell Pathway	Nucleus . Nucleus speckle .
Tissue Specificity	Widely expressed.
Function	disease:Defects in PRPF8 are the cause of retinitis pigmentosa type 13 (RP13) [MIM:600059]. RP leads to degeneration of retinal photoreceptor cells. Patients typically have night vision blindness and loss of midperipheral visual field. As their condition progresses, they lose their far peripheral visual field and eventually central vision as well. RP13 inheritance is autosomal dominant.,function:Central component of the spliceosome, which may play a role in aligning the pre-mRNA 5'- and 3'-exons for ligation. Interacts with U5 snRNA, and with pre-mRNA 5'-splice sites in B spliceosomes and 3'-splice sites in C spliceosomes.,PTM:Phosphorylated upon DNA damage, probably by ATM or ATR.,similarity:Contains 1 MPN (JAB/Mov34) domain.,subunit:Part of the U5 snRNP complex, and of U5.4/6 and U5.U4atac/U6atac snRNP complexes in U2- and U12-dependent spliceosomes, respectively. Found in a mRNA splic

Nanjing BYabscience technology Co.,Ltd



Background	Pre-mRNA splicing occurs in 2 sequential transesterification steps. The protein encoded by this gene is a component of both U2- and U12-dependent spliceosomes, and found to be essential for the catalytic step II in pre-mRNA splicing process. It contains several WD repeats, which function in protein-protein interactions. This protein has a sequence similarity to yeast Prp8 protein. This gene is a candidate gene for autosomal dominant retinitis pigmentosa. [provided by RefSeq, Jul 2008],
matters needing attention	Avoid repeated freezing and thawing!
Usage suggestions	This product can be used in immunological reaction related experiments. For more information, please consult technical personnel.

Products Images



Immunohistochemical analysis of paraffin-embedded human tonsil. 1, Antibody was diluted at 1:200(4° overnight). 2, Tris-EDTA,pH9.0 was used for antigen retrieval. 3,Secondary antibody was diluted at 1:200(room temperature, 45min).