



KCE1L Polyclonal Antibody

| | |
|---------------------------|--|
| Catalog No | BYab-05952 |
| Isotype | IgG |
| Reactivity | Human;Mouse |
| Applications | WB;ELISA |
| Gene Name | KCNE1L AMMECR2 |
| Protein Name | Potassium voltage-gated channel subfamily E member 1-like protein (AMME syndrome candidate gene 2 protein) |
| Immunogen | Synthesized peptide derived from human protein . at AA range: 40-120 |
| Specificity | KCE1L Polyclonal Antibody detects endogenous levels of protein. |
| Formulation | Liquid in PBS containing 50% glycerol, and 0.02% sodium azide. |
| Source | Polyclonal, Rabbit,IgG |
| Purification | The antibody was affinity-purified from rabbit antiserum by affinity-chromatography using epitope-specific immunogen. |
| Dilution | WB 1:500-2000 ELISA 1:5000-20000 |
| Concentration | 1 mg/ml |
| Purity | ≥90% |
| Storage Stability | -20°C/1 year |
| Synonyms | |
| Observed Band | 15kD |
| Cell Pathway | Membrane ; Single-pass type I membrane protein . |
| Tissue Specificity | Highly expressed in heart, skeletal muscle, brain, spinal cord and placenta. |
| Function | disease:Defects in KCNE1L may be a cause of AMME complex [MIM:300194]; also known as Alport syndrome, mental retardation, midface hypoplasia and elliptocytosis, and of additional mild abnormalities of the heart. The AMME complex is a contiguous gene deletion syndrome.,similarity:Belongs to the potassium channel KCNE family.,tissue specificity:Highly expressed in heart, skeletal muscle, brain, spinal cord and placenta., |
| Background | potassium voltage-gated channel subfamily E regulatory subunit 5(KCNE5) Homo sapiens Voltage-gated potassium (Kv) channels represent the most complex class of voltage-gated ion channels from both functional and structural standpoints. Their diverse functions include regulating neurotransmitter release, heart rate, insulin secretion, neuronal excitability, epithelial electrolyte transport, |

Nanjing BYabscience technology Co.,Ltd



smooth muscle contraction, and cell volume. This gene encodes a membrane protein which has sequence similarity to the KCNE1 gene product, a member of the potassium channel, voltage-gated, isk-related subfamily. This intronless gene is deleted in AMME contiguous gene syndrome and may be involved in the cardiac and neurologic abnormalities found in the AMME contiguous gene syndrome. [provided by RefSeq, Jul 2008],

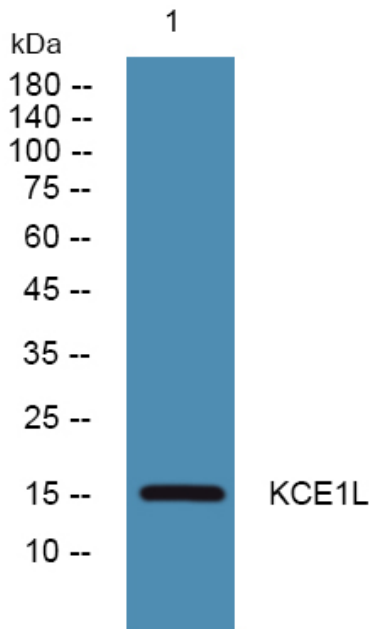
matters needing attention

Avoid repeated freezing and thawing!

Usage suggestions

This product can be used in immunological reaction related experiments. For more information, please consult technical personnel.

Products Images



Western blot analysis of lysates from K562 cells, primary antibody was diluted at 1:1000, 4° over night