



# PABP2 Polyclonal Antibody

<b>Catalog No</b>	BYab-05943
<b>Isotype</b>	IgG
<b>Reactivity</b>	Human;Mouse
<b>Applications</b>	WB;ELISA
<b>Gene Name</b>	PABPN1 PAB2 PABP2
<b>Protein Name</b>	Polyadenylate-binding protein 2 (PABP-2) (Poly(A)-binding protein 2) (Nuclear poly(A)-binding protein 1) (Poly(A)-binding protein II) (PABII) (Polyadenylate-binding nuclear protein 1)
<b>Immunogen</b>	Synthesized peptide derived from human protein . at AA range: 170-250
<b>Specificity</b>	PABP2 Polyclonal Antibody detects endogenous levels of protein.
<b>Formulation</b>	Liquid in PBS containing 50% glycerol, and 0.02% sodium azide.
<b>Source</b>	Polyclonal, Rabbit,IgG
<b>Purification</b>	The antibody was affinity-purified from rabbit antiserum by affinity-chromatography using epitope-specific immunogen.
<b>Dilution</b>	WB 1:500-2000 ELISA 1:5000-20000
<b>Concentration</b>	1 mg/ml
<b>Purity</b>	≥90%
<b>Storage Stability</b>	-20°C/1 year
<b>Synonyms</b>	
<b>Observed Band</b>	33kD
<b>Cell Pathway</b>	Nucleus . Cytoplasm . Nucleus speckle . Localized in cytoplasmic mRNP granules containing untranslated mRNAs. Shuttles between the nucleus and the cytoplasm but predominantly found in the nucleus (PubMed:10688363). Its nuclear import may involve the nucleocytoplasmic transport receptor transportin and a RAN-GTP-sensitive import mechanism (By similarity). Is exported to the cytoplasm by a carrier-mediated pathway that is independent of mRNA traffic. Colocalizes with SKIP and poly(A) RNA in nuclear speckles (By similarity). Intranuclear filamentous inclusions or 'aggregates' are detected in the myocytes of patients; these inclusions contain PABPN1, ubiquitin, subunits of the proteasome and poly(A) RNA. .
<b>Tissue Specificity</b>	Ubiquitous.
<b>Function</b>	disease:Defects in PABPN1 are the cause of oculopharyngeal muscular dystrophy (OPMD) [MIM:164300]. OPMD is a form of late-onset slowly

Nanjing BYabscience technology Co.,Ltd



progressive myopathy characterized by eyelid ptosis, dysphagia and, sometimes by other cranial and limb-muscle involvement. ,domain:The RRM domain is essential for specific adenine bases recognition in the poly(A) tail but not sufficient for poly(A) binding. ,function:Involved in the 3'-end formation of mRNA precursors (pre-mRNA) by the addition of a poly(A) tail of 200-250 nt to the upstream cleavage product. Stimulates poly(A) polymerase (PAPOLA) conferring processivity on the poly(A) tail elongation reaction and controls also the poly(A) tail length. Increases the affinity of poly(A) polymerase for RNA. Is also present at various stages of mRNA metabolism including nucleocytoplasmic trafficking and nonsense-mediated decay (NMD) of mRNA. Cooperates with S

**Background**

This gene encodes an abundant nuclear protein that binds with high affinity to nascent poly(A) tails. The protein is required for progressive and efficient polymerization of poly(A) tails at the 3' ends of eukaryotic transcripts and controls the size of the poly(A) tail to about 250 nt. At steady-state, this protein is localized in the nucleus whereas a different poly(A) binding protein is localized in the cytoplasm. This gene contains a GCG trinucleotide repeat at the 5' end of the coding region, and expansion of this repeat from the normal 6 copies to 8-13 copies leads to autosomal dominant oculopharyngeal muscular dystrophy (OPMD) disease. Related pseudogenes have been identified on chromosomes 19 and X. Read-through transcription also exists between this gene and the neighboring upstream BCL2-like 2 (BCL2L2) gene. [provided by RefSeq, Dec 2010],

**matters needing attention**

Avoid repeated freezing and thawing!

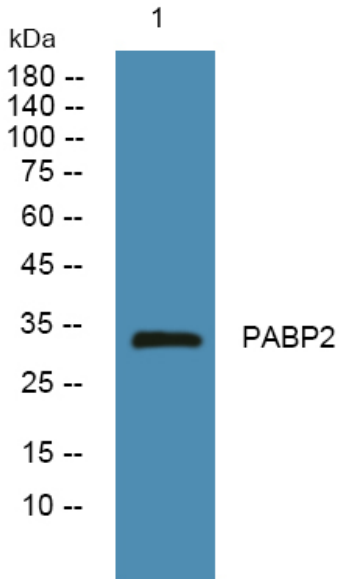
**Usage suggestions**

This product can be used in immunological reaction related experiments. For more information, please consult technical personnel.

**Nanjing BYabscience technology Co.,Ltd**



## Products Images



Western blot analysis of lysates from U2OS cells,  
primary antibody was diluted at 1:1000, 4° over night