



PLS4 Polyclonal Antibody

Catalog No	BYab-05932
Isotype	IgG
Reactivity	Human;Rat;Mouse;
Applications	WB;ELISA
Gene Name	PLSCR4 GIG43
Protein Name	Phospholipid scramblase 4 (PL scramblase 4) (Ca(2+)-dependent phospholipid scramblase 4) (Cell growth-inhibiting gene 43 protein) (TRA1)
Immunogen	Synthesized peptide derived from human protein . at AA range: 190-270
Specificity	PLS4 Polyclonal Antibody detects endogenous levels of protein.
Formulation	Liquid in PBS containing 50% glycerol, and 0.02% sodium azide.
Source	Polyclonal, Rabbit,IgG
Purification	The antibody was affinity-purified from rabbit antiserum by affinity-chromatography using epitope-specific immunogen.
Dilution	WB 1:500-2000 ELISA 1:5000-20000
Concentration	1 mg/ml
Purity	≥90%
Storage Stability	-20°C/1 year
Synonyms	
Observed Band	36kD
Cell Pathway	Membrane ; Single-pass type II membrane protein .
Tissue Specificity	Expressed in heart, brain, placenta, lung, liver, kidney, pancreas, spleen, thymus, prostate, testis, uterus, small intestine and colon. Not detected in peripheral blood lymphocytes.
Function	cofactor:Calcium.,function:May mediate accelerated ATP-independent bidirectional transbilayer migration of phospholipids upon binding calcium ions that results in a loss of phospholipid asymmetry in the plasma membrane. May play a central role in the initiation of fibrin clot formation, in the activation of mast cells and in the recognition of apoptotic and injured cells by the reticuloendothelial system.,similarity:Belongs to the phospholipid scramblase family.,tissue specificity:Expressed in heart, brain, placenta, lung, liver, kidney, pancreas, spleen, thymus, prostate, testis, uterus, small intestine and colon. Not detected in peripheral blood lymphocytes.,

Nanjing BYabscience technology Co.,Ltd



Background

cofactor:Calcium.,function:May mediate accelerated ATP-independent bidirectional transbilayer migration of phospholipids upon binding calcium ions that results in a loss of phospholipid asymmetry in the plasma membrane. May play a central role in the initiation of fibrin clot formation, in the activation of mast cells and in the recognition of apoptotic and injured cells by the reticuloendothelial system.,similarity:Belongs to the phospholipid scramblase family.,tissue specificity:Expressed in heart, brain, placenta, lung, liver, kidney, pancreas, spleen, thymus, prostate, testis, uterus, small intestine and colon. Not detected in peripheral blood lymphocytes.,

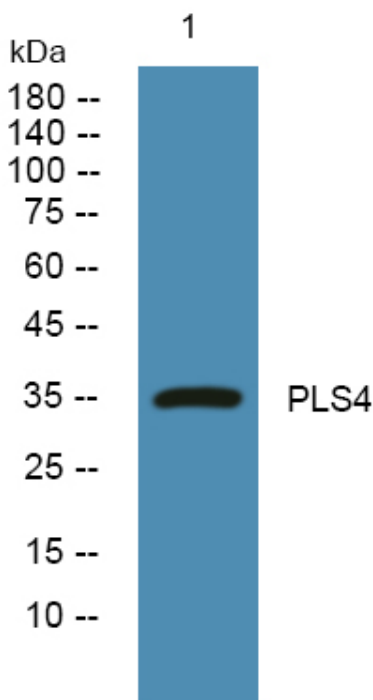
matters needing attention

Avoid repeated freezing and thawing!

Usage suggestions

This product can be used in immunological reaction related experiments. For more information, please consult technical personnel.

Products Images



Western blot analysis of lysates from PC12 cells, primary antibody was diluted at 1:1000, 4° over night