



# PLS2 Polyclonal Antibody

<b>Catalog No</b>	BYab-05930
<b>Isotype</b>	IgG
<b>Reactivity</b>	Human;Rat;Mouse;
<b>Applications</b>	WB;ELISA
<b>Gene Name</b>	PLSCR2
<b>Protein Name</b>	Phospholipid scramblase 2 (PL scramblase 2) (Ca(2+)-dependent phospholipid scramblase 2)
<b>Immunogen</b>	Synthesized peptide derived from human protein . at AA range: 90-170
<b>Specificity</b>	PLS2 Polyclonal Antibody detects endogenous levels of protein.
<b>Formulation</b>	Liquid in PBS containing 50% glycerol, and 0.02% sodium azide.
<b>Source</b>	Polyclonal, Rabbit,IgG
<b>Purification</b>	The antibody was affinity-purified from rabbit antiserum by affinity-chromatography using epitope-specific immunogen.
<b>Dilution</b>	WB 1:500-2000 ELISA 1:5000-20000
<b>Concentration</b>	1 mg/ml
<b>Purity</b>	≥90%
<b>Storage Stability</b>	-20°C/1 year
<b>Synonyms</b>	
<b>Observed Band</b>	24kD
<b>Cell Pathway</b>	Membrane ; Single-pass type II membrane protein .; [Isoform 1]: Nucleus .
<b>Tissue Specificity</b>	Expression of isoform 1 seems restricted to testis.
<b>Function</b>	cofactor:Calcium.,function:May mediate accelerated ATP-independent bidirectional transbilayer migration of phospholipids upon binding calcium ions that results in a loss of phospholipid asymmetry in the plasma membrane. May play a central role in the initiation of fibrin clot formation, in the activation of mast cells and in the recognition of apoptotic and injured cells by the reticuloendothelial system.,online information:Scramblase entry,similarity:Belongs to the phospholipid scramblase family.,tissue specificity:Exclusively expressed in testis.,
<b>Background</b>	This gene encodes a member of the phospholipid scramblase family. Phospholipid scramblases are membrane proteins that mediate calcium-dependent, non-specific movement of plasma membrane phospholipids and phosphatidylserine exposure. The encoded protein contains a low affinity

Nanjing BYabscience technology Co.,Ltd



calcium binding motif and may play a role in blood coagulation and apoptosis. Alternatively spliced transcript variants encoding multiple isoforms have been observed for this gene. [provided by RefSeq, Jan 2011],

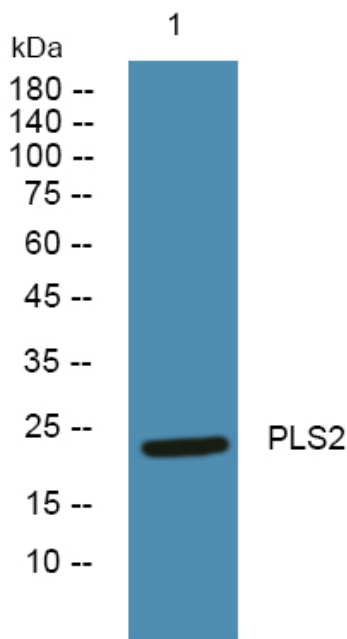
**matters needing attention**

Avoid repeated freezing and thawing!

**Usage suggestions**

This product can be used in immunological reaction related experiments. For more information, please consult technical personnel.

**Products Images**



Western blot analysis of lysates from PC12 cells, primary antibody was diluted at 1:1000, 4° over night