



PA21B Polyclonal Antibody

| | |
|---------------------------|---|
| Catalog No | BYab-05928 |
| Isotype | IgG |
| Reactivity | Human;Rat;Mouse; |
| Applications | WB;ELISA |
| Gene Name | PLA2G1B PLA2 PLA2A PPLA2 |
| Protein Name | Phospholipase A2 (EC 3.1.1.4) (Group IB phospholipase A2) (Phosphatidylcholine 2-acylhydrolase 1B) |
| Immunogen | Synthesized peptide derived from human protein . at AA range: 70-150 |
| Specificity | PA21B Polyclonal Antibody detects endogenous levels of protein. |
| Formulation | Liquid in PBS containing 50% glycerol, and 0.02% sodium azide. |
| Source | Polyclonal, Rabbit,IgG |
| Purification | The antibody was affinity-purified from rabbit antiserum by affinity-chromatography using epitope-specific immunogen. |
| Dilution | WB 1:500-2000 ELISA 1:5000-20000 |
| Concentration | 1 mg/ml |
| Purity | ≥90% |
| Storage Stability | -20°C/1 year |
| Synonyms | |
| Observed Band | 16kD |
| Cell Pathway | Secreted . Secreted from pancreatic acinar cells in its inactive form. |
| Tissue Specificity | Selectively expressed in pancreas, lung, liver and kidney. Also detected at lower levels in ovary and testis. |
| Function | catalytic activity:Phosphatidylcholine + H(2)O = 1-acylglycerophosphocholine + a carboxylate.,cofactor:Binds 1 calcium ion per subunit.,function:PA2 catalyzes the calcium-dependent hydrolysis of the 2-acyl groups in 3-sn-phosphoglycerides.,similarity:Belongs to the phospholipase A2 family., |
| Background | This gene encodes a secreted member of the phospholipase A2 (PLA2) class of enzymes, which is produced by the pancreatic acinar cells. The encoded calcium-dependent enzyme catalyzes the hydrolysis of the sn-2 position of membrane glycerophospholipids to release arachidonic acid (AA) and lysophospholipids. AA is subsequently converted by downstream metabolic enzymes to several bioactive lipophilic compounds (eicosanoids), including prostaglandins (PGs) and leukotrienes (LTs). The enzyme may be involved in |

Nanjing BYabscience technology Co.,Ltd



several physiological processes including cell contraction, cell proliferation and pathological response. [provided by RefSeq, Aug 2013],

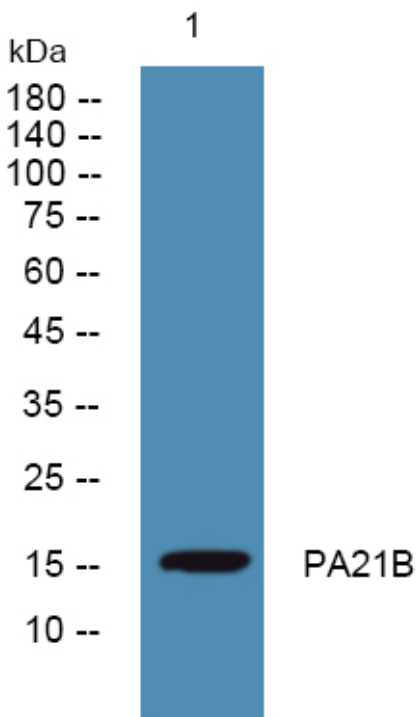
matters needing attention

Avoid repeated freezing and thawing!

Usage suggestions

This product can be used in immunological reaction related experiments. For more information, please consult technical personnel.

Products Images



Western blot analysis of lysates from A431 cells, primary antibody was diluted at 1:1000, 4° over night