



PECR Polyclonal Antibody

Catalog No	BYab-05910
Isotype	IgG
Reactivity	Human;Rat;Mouse
Applications	WB;ELISA
Gene Name	PECR PRO1004
Protein Name	Peroxisomal trans-2-enoyl-CoA reductase (TERP) (EC 1.3.1.38) (2,4-dienoyl-CoA reductase-related protein) (DCR-RP) (HPDHase) (pVI-ARL)
Immunogen	Synthesized peptide derived from human protein . at AA range: 40-120
Specificity	PECR Polyclonal Antibody detects endogenous levels of protein.
Formulation	Liquid in PBS containing 50% glycerol, and 0.02% sodium azide.
Source	Polyclonal, Rabbit,IgG
Purification	The antibody was affinity-purified from rabbit antiserum by affinity-chromatography using epitope-specific immunogen.
Dilution	WB 1:500-2000 ELISA 1:5000-20000
Concentration	1 mg/ml
Purity	≥90%
Storage Stability	-20°C/1 year
Synonyms	
Observed Band	33kD
Cell Pathway	Peroxisome .
Tissue Specificity	Colon,Fetal liver,Liver,Placenta,
Function	catalytic activity:Acyl-CoA + NADP(+) = trans-2,3-dehydroacyl-CoA + NADPH.,function:Participates in chain elongation of fatty acids. Has no 2,4-dienoyl-CoA reductase activity.,induction:Not induced by IR.,pathway:Lipid metabolism; fatty acid biosynthesis.,similarity:Belongs to the short-chain dehydrogenases/reductases (SDR) family.,subunit:Interacts with PEX5, probably required to target it into peroxisomes.,
Background	catalytic activity:Acyl-CoA + NADP(+) = trans-2,3-dehydroacyl-CoA + NADPH.,function:Participates in chain elongation of fatty acids. Has no 2,4-dienoyl-CoA reductase activity.,induction:Not induced by IR.,pathway:Lipid metabolism; fatty acid biosynthesis.,similarity:Belongs to the short-chain dehydrogenases/reductases (SDR) family.,subunit:Interacts with PEX5, probably

Nanjing BYabscience technology Co.,Ltd



required to target it into peroxisomes.,

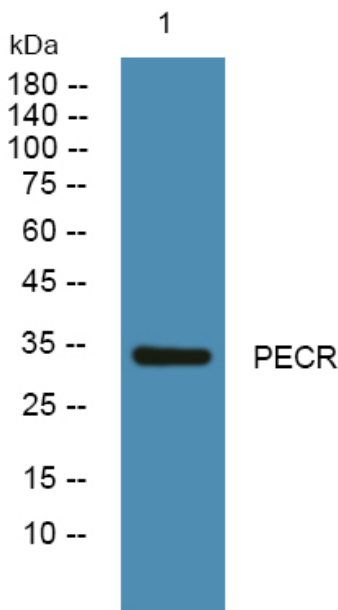
matters needing attention

Avoid repeated freezing and thawing!

Usage suggestions

This product can be used in immunological reaction related experiments. For more information, please consult technical personnel.

Products Images



Western blot analysis of lysates from KB cells, primary antibody was diluted at 1:1000, 4° over night