



PAR6G Polyclonal Antibody

Catalog No	BYab-05901
Isotype	IgG
Reactivity	Human;Mouse
Applications	WB;ELISA
Gene Name	PARD6G PAR6G
Protein Name	Partitioning defective 6 homolog gamma (PAR-6 gamma) (PAR6D)
Immunogen	Synthesized peptide derived from human protein . at AA range: 240-320
Specificity	PAR6G Polyclonal Antibody detects endogenous levels of protein.
Formulation	Liquid in PBS containing 50% glycerol, and 0.02% sodium azide.
Source	Polyclonal, Rabbit,IgG
Purification	The antibody was affinity-purified from rabbit antiserum by affinity-chromatography using epitope-specific immunogen.
Dilution	WB 1:500-2000 ELISA 1:5000-20000
Concentration	1 mg/ml
Purity	≥90%
Storage Stability	-20°C/1 year
Synonyms	
Observed Band	41kD
Cell Pathway	Cytoplasm. Cell membrane . Cell junction, tight junction .
Tissue Specificity	Widely expressed, with a higher expression in fetal and adult kidney.
Function	domain:The pseudo-CRIB domain together with the PDZ domain is required for the interaction with Rho small GTPases.,function:Adapter protein involved in asymmetrical cell division and cell polarization processes. May play a role in the formation of epithelial tight junctions. The PARD6-PARD3 complex links GTP-bound Rho small GTPases to atypical protein kinase C proteins.,similarity:Belongs to the PAR6 family.,similarity:Contains 1 OPR domain.,similarity:Contains 1 PDZ (DHR) domain.,similarity:Contains 1 pseudo-CRIB domain.,subunit:Interacts with PARD3 (Probable). Interacts with GTP-bound forms of CDC42, ARHQ/TC10 and RAC1. Interacts with the N-terminal part of PRKCI and PRKCZ.,tissue specificity:Widely expressed, with a higher expression in fetal and adult kidney.,

Nanjing BYabscience technology Co.,Ltd



Background

domain:The pseudo-CRIB domain together with the PDZ domain is required for the interaction with Rho small GTPases.,function:Adapter protein involved in asymmetrical cell division and cell polarization processes. May play a role in the formation of epithelial tight junctions. The PARD6-PARD3 complex links GTP-bound Rho small GTPases to atypical protein kinase C proteins.,similarity:Belongs to the PAR6 family.,similarity:Contains 1 OPR domain.,similarity:Contains 1 PDZ (DHR) domain.,similarity:Contains 1 pseudo-CRIB domain.,subunit:Interacts with PARD3 (Probable). Interacts with GTP-bound forms of CDC42, ARHQ/TC10 and RAC1. Interacts with the N-terminal part of PRKCI and PRKCZ.,tissue specificity:Widely expressed, with a higher expression in fetal and adult kidney.,

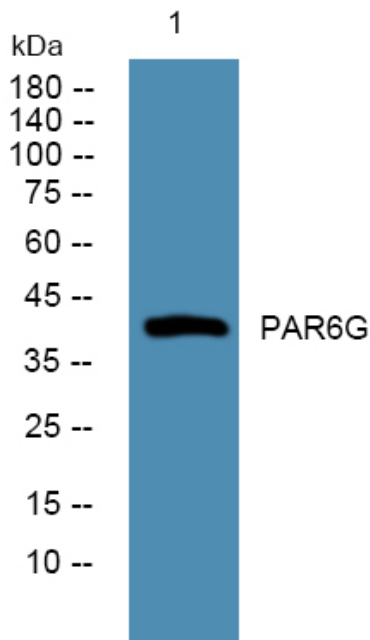
matters needing attention

Avoid repeated freezing and thawing!

Usage suggestions

This product can be used in immunological reaction related experiments. For more information, please consult technical personnel.

Products Images



Western blot analysis of lysates from HCT116 cells, primary antibody was diluted at 1:1000, 4° over night