



NOL7 Polyclonal Antibody

Catalog No	BYab-05884
Isotype	IgG
Reactivity	Human;Mouse
Applications	WB;ELISA
Gene Name	NOL7 C6orf90 NOP27
Protein Name	Nucleolar protein 7 (Nucleolar protein of 27 kDa)
Immunogen	Synthesized peptide derived from human protein . at AA range: 190-270
Specificity	NOL7 Polyclonal Antibody detects endogenous levels of protein.
Formulation	Liquid in PBS containing 50% glycerol, and 0.02% sodium azide.
Source	Polyclonal, Rabbit,IgG
Purification	The antibody was affinity-purified from rabbit antiserum by affinity-chromatography using epitope-specific immunogen.
Dilution	WB 1:500-2000 ELISA 1:5000-20000
Concentration	1 mg/ml
Purity	≥90%
Storage Stability	-20°C/1 year
Synonyms	
Observed Band	28kD
Cell Pathway	Nucleus, nucleolus .
Tissue Specificity	Expressed in numerous tissues. Particularly prevalent in the adrenal gland, thyroid gland, heart and skeletal muscle.
Function	sequence caution:Contaminating sequence. Potential poly-A sequence.,tissue specificity:Expressed in numerous tissues. Particularly prevalent in the adrenal gland, thyroid gland, heart and skeletal muscle.,
Background	The protein encoded by this gene localizes to the nucleolus, where it maintains nucleolar structure and cell growth rates. The encoded protein also functions as a tumor suppressor and regulator of angiogenesis. The RB tumor suppressor gene recruits transcription factors to this gene and positively regulates its expression. Two transcript variants encoding the same protein have been found for this gene. [provided by RefSeq, Dec 2015],

Nanjing BYabscience technology Co.,Ltd



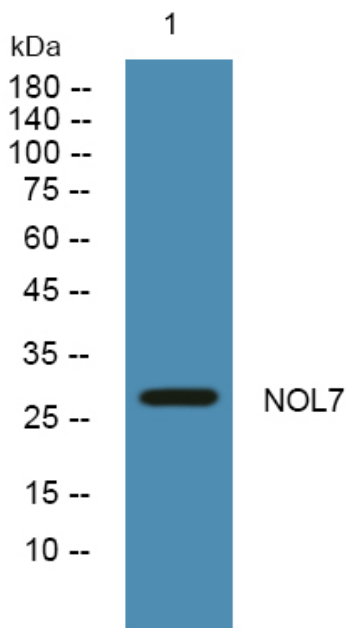
matters needing attention

Avoid repeated freezing and thawing!

Usage suggestions

This product can be used in immunological reaction related experiments. For more information, please consult technical personnel.

Products Images



Western blot analysis of lysates from SH-SY5Y cells, primary antibody was diluted at 1:1000, 4° over night