



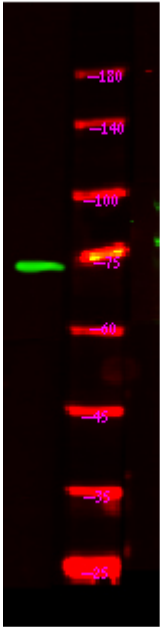
NOL4 Polyclonal Antibody

| | |
|----------------------------------|---|
| Catalog No | BYab-05883 |
| Isotype | IgG |
| Reactivity | Human;Mouse |
| Applications | WB;ELISA |
| Gene Name | NOL4 NOLP HRIHFB2255 |
| Protein Name | Nucleolar protein 4 (Nucleolar-localized protein) |
| Immunogen | Synthesized peptide derived from human protein . at AA range: 50-130 |
| Specificity | NOL4 Polyclonal Antibody detects endogenous levels of protein. |
| Formulation | Liquid in PBS containing 50% glycerol, and 0.02% sodium azide. |
| Source | Polyclonal, Rabbit,IgG |
| Purification | The antibody was affinity-purified from rabbit antiserum by affinity-chromatography using epitope-specific immunogen. |
| Dilution | WB 1:500-2000 ELISA 1:5000-20000 |
| Concentration | 1 mg/ml |
| Purity | ≥90% |
| Storage Stability | -20°C/1 year |
| Synonyms | |
| Observed Band | 70kD |
| Cell Pathway | Nucleus, nucleolus . |
| Tissue Specificity | Expressed predominantly in fetal brain, adult brain and testis. |
| Function | tissue specificity:Expressed predominantly in fetal brain, adult brain and testis., |
| Background | tissue specificity:Expressed predominantly in fetal brain, adult brain and testis., |
| matters needing attention | Avoid repeated freezing and thawing! |
| Usage suggestions | This product can be used in immunological reaction related experiments. For more information, please consult technical personnel. |

Nanjing BYabscience technology Co.,Ltd



Products Images



Western Blot analysis of HEK293 lysis, using primary antibody at 1:1000 dilution. Secondary antibody(catalog#:RS23920) was diluted at 1:10000