



NPTX2 Polyclonal Antibody

Catalog No	BYab-05850
Isotype	IgG
Reactivity	Human;Rat;Mouse
Applications	WB;ELISA
Gene Name	NPTX2
Protein Name	Neuronal pentraxin-2 (NP2) (Neuronal pentraxin II) (NP-II)
Immunogen	Synthesized peptide derived from human protein . at AA range: 130-210
Specificity	NPTX2 Polyclonal Antibody detects endogenous levels of protein.
Formulation	Liquid in PBS containing 50% glycerol, and 0.02% sodium azide.
Source	Polyclonal, Rabbit,IgG
Purification	The antibody was affinity-purified from rabbit antiserum by affinity-chromatography using epitope-specific immunogen.
Dilution	WB 1:500-2000 ELISA 1:5000-20000
Concentration	1 mg/ml
Purity	≥90%
Storage Stability	-20°C/1 year
Synonyms	
Observed Band	47kD
Cell Pathway	Secreted .
Tissue Specificity	Brain, pancreas, liver, heart and skeletal muscle. Highest levels are seen in the testis.
Function	cofactor: Binds 2 calcium ions per subunit.,function: Likely to play role in the modification of cellular properties that underlie long-term plasticity. Binds to agar matrix in a calcium-dependent manner.,similarity: Contains 1 pentaxin domain.,tissue specificity: Brain, pancreas, liver, heart and skeletal muscle. Highest levels are seen in the testis.,
Background	This gene encodes a member of the family of neuronal petraxins, synaptic proteins that are related to C-reactive protein. This protein is involved in excitatory synapse formation. It also plays a role in clustering of alpha-amino-3-hydroxy-5-methyl-4-isoxazolepropionic acid (AMPA)-type glutamate receptors at established synapses, resulting in non-apoptotic cell death of dopaminergic nerve cells. Up-regulation of this gene in Parkinson disease (PD)

Nanjing BYabscience technology Co.,Ltd



tissues suggests that the protein may be involved in the pathology of PD.
[provided by RefSeq, Feb 2009],

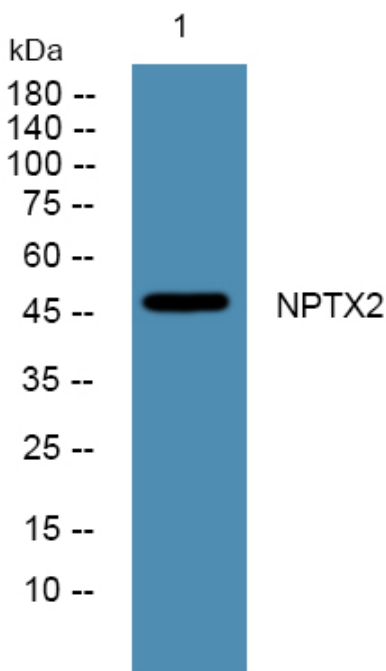
matters needing attention

Avoid repeated freezing and thawing!

Usage suggestions

This product can be used in immunological reaction related experiments. For more information, please consult technical personnel.

Products Images



Western blot analysis of lysates from DU145 cells,
primary antibody was diluted at 1:1000, 4° over night