



GPM6B Polyclonal Antibody

Catalog No	BYab-05847
Isotype	IgG
Reactivity	Human;Rat;Mouse
Applications	WB;ELISA
Gene Name	GPM6B M6B
Protein Name	Neuronal membrane glycoprotein M6-b (M6b)
Immunogen	Synthesized peptide derived from human protein . at AA range: 450-530
Specificity	GPM6B Polyclonal Antibody detects endogenous levels of protein.
Formulation	Liquid in PBS containing 50% glycerol, and 0.02% sodium azide.
Source	Polyclonal, Rabbit,IgG
Purification	The antibody was affinity-purified from rabbit antiserum by affinity-chromatography using epitope-specific immunogen.
Dilution	WB 1:500-2000 ELISA 1:5000-20000
Concentration	1 mg/ml
Purity	≥90%
Storage Stability	-20°C/1 year
Synonyms	
Observed Band	29kD
Cell Pathway	Cell membrane ; Multi-pass membrane protein . Colocalizes with SERT at the plasma membrane. .
Tissue Specificity	Neurons and glia; cerebellar Bergmann glia, in glia within white matter tracts of the cerebellum and cerebrum, and in embryonic dorsal root ganglia.
Function	function:May be involved in neural development.,similarity:Belongs to the myelin proteolipid protein family.,tissue specificity:Neurons and glia; cerebellar Bergmann glia, in glia within white matter tracts of the cerebellum and cerebrum, and in embryonic dorsal root ganglia.,
Background	glycoprotein M6B(GPM6B) Homo sapiens This gene encodes a membrane glycoprotein that belongs to the proteolipid protein family. Proteolipid protein family members are expressed in most brain regions and are thought to be involved in cellular housekeeping functions such as membrane trafficking and cell-to-cell communication. This protein may also be involved in osteoblast differentiation. Alternate splicing results in multiple transcript variants. Pseudogenes of this gene are located on chromosomes Y and 22. [provided by

Nanjing BYabscience technology Co.,Ltd



RefSeq, Jan 2016],

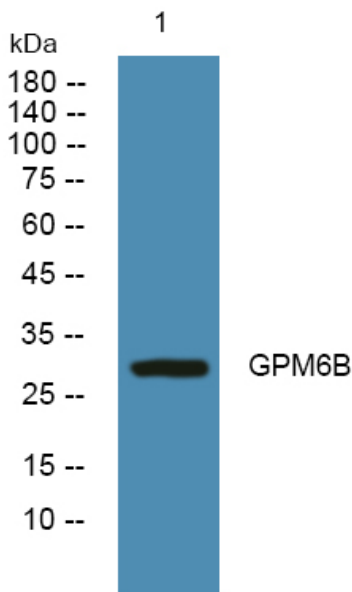
matters needing attention

Avoid repeated freezing and thawing!

Usage suggestions

This product can be used in immunological reaction related experiments. For more information, please consult technical personnel.

Products Images



Western blot analysis of lysates from PC12 cells, primary antibody was diluted at 1:1000, 4° over night