



# NXPH2 Polyclonal Antibody

<b>Catalog No</b>	BYab-05826
<b>Isotype</b>	IgG
<b>Reactivity</b>	Human;Mouse
<b>Applications</b>	WB;ELISA
<b>Gene Name</b>	NXPH2 NPH2
<b>Protein Name</b>	Neurexophilin-2
<b>Immunogen</b>	Synthesized peptide derived from human protein . at AA range: 140-220
<b>Specificity</b>	NXPH2 Polyclonal Antibody detects endogenous levels of protein.
<b>Formulation</b>	Liquid in PBS containing 50% glycerol, and 0.02% sodium azide.
<b>Source</b>	Polyclonal, Rabbit,IgG
<b>Purification</b>	The antibody was affinity-purified from rabbit antiserum by affinity-chromatography using epitope-specific immunogen.
<b>Dilution</b>	WB 1:500-2000 ELISA 1:5000-20000
<b>Concentration</b>	1 mg/ml
<b>Purity</b>	≥90%
<b>Storage Stability</b>	-20°C/1 year
<b>Synonyms</b>	
<b>Observed Band</b>	29kD
<b>Cell Pathway</b>	Secreted .
<b>Tissue Specificity</b>	Expressed in brain and kidney.
<b>Function</b>	function:May be signaling molecules that resemble neuropeptides and that act by binding to alpha-neurexins and possibly other receptors .,PTM:May be proteolytically processed at the boundary between the N-terminal non-conserved and the central conserved domain in neuron-like cells.,similarity:Belongs to the neurexophilin family.,tissue specificity:Expressed in brain and kidney.,
<b>Background</b>	function:May be signaling molecules that resemble neuropeptides and that act by binding to alpha-neurexins and possibly other receptors .,PTM:May be proteolytically processed at the boundary between the N-terminal non-conserved and the central conserved domain in neuron-like cells.,similarity:Belongs to the neurexophilin family.,tissue specificity:Expressed in brain and kidney.,

Nanjing BYabscience technology Co.,Ltd



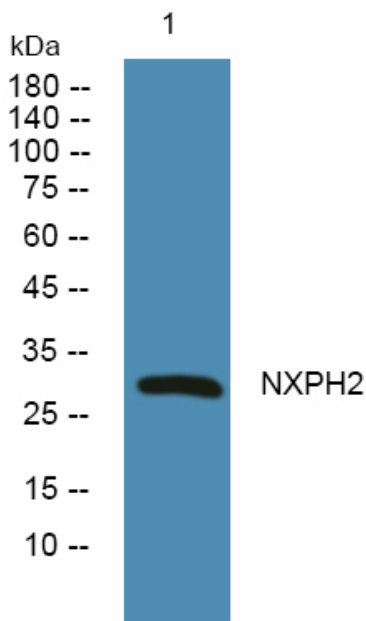
**matters needing attention**

Avoid repeated freezing and thawing!

**Usage suggestions**

This product can be used in immunological reaction related experiments. For more information, please consult technical personnel.

**Products Images**



Western blot analysis of lysates from HCT116 cells, primary antibody was diluted at 1:1000, 4° over night