



# NDUB3 Polyclonal Antibody

<b>Catalog No</b>	BYab-05799
<b>Isotype</b>	IgG
<b>Reactivity</b>	Human;Mouse
<b>Applications</b>	WB;ELISA
<b>Gene Name</b>	NDUFB3
<b>Protein Name</b>	NADH dehydrogenase [ubiquinone] 1 beta subcomplex subunit 3 (Complex I-B12) (CI-B12) (NADH-ubiquinone oxidoreductase B12 subunit)
<b>Immunogen</b>	Synthesized peptide derived from human protein . at AA range: 40-120
<b>Specificity</b>	NDUB3 Polyclonal Antibody detects endogenous levels of protein.
<b>Formulation</b>	Liquid in PBS containing 50% glycerol, and 0.02% sodium azide.
<b>Source</b>	Polyclonal, Rabbit,IgG
<b>Purification</b>	The antibody was affinity-purified from rabbit antiserum by affinity-chromatography using epitope-specific immunogen.
<b>Dilution</b>	WB 1:500-2000 ELISA 1:5000-20000
<b>Concentration</b>	1 mg/ml
<b>Purity</b>	≥90%
<b>Storage Stability</b>	-20°C/1 year
<b>Synonyms</b>	
<b>Observed Band</b>	10kD
<b>Cell Pathway</b>	Mitochondrion inner membrane ; Single-pass membrane protein ; Matrix side .
<b>Tissue Specificity</b>	Heart,Lung,
<b>Function</b>	function:Accessory subunit of the mitochondrial membrane respiratory chain NADH dehydrogenase (Complex I), that is believed to be not involved in catalysis. Complex I functions in the transfer of electrons from NADH to the respiratory chain. The immediate electron acceptor for the enzyme is believed to be ubiquinone.,similarity:Belongs to the complex I NDUFB3 subunit family.,subunit:Complex I is composed of 45 different subunits.,
<b>Background</b>	This gene encodes an accessory subunit of the mitochondrial membrane respiratory chain NADH dehydrogenase (Complex I) which is the first enzyme in the electron transport chain of mitochondria. This protein localizes to the inner membrane of the mitochondrion as a single-pass membrane protein. Mutations in this gene contribute to mitochondrial complex 1 deficiency. Alternative splicing

Nanjing BYabscience technology Co.,Ltd



results in multiple transcript variants encoding the same protein. Humans have multiple pseudogenes of this gene. [provided by RefSeq, Mar 2012],

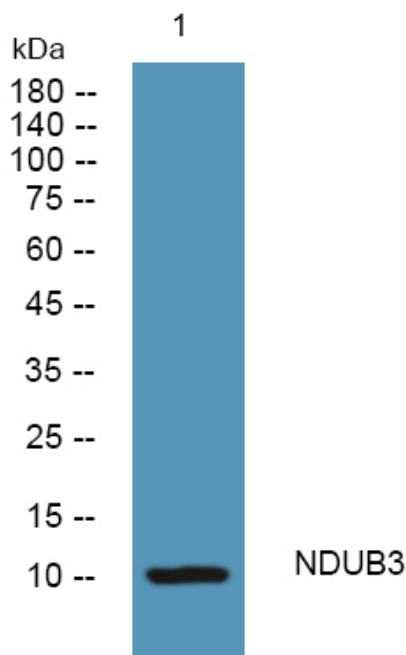
**matters needing attention**

Avoid repeated freezing and thawing!

**Usage suggestions**

This product can be used in immunological reaction related experiments. For more information, please consult technical personnel.

## Products Images



Western blot analysis of lysates from U2OS cells, primary antibody was diluted at 1:1000, 4° over night